

SEAMEN'S
CHURCH INSTITUTE
OF NEW YORK



SEVENTY THIRD
ANNUAL REPORT
1917

ANNUAL REPORT
FOR THE YEAR ENDING 1917
PRESENTED AT THE
ADJOURNED ANNUAL MEETING OF THE SOCIETY
THURSDAY, JANUARY 24, 1918

STATIONS OF THE SOCIETY

SOUTH STREET INSTITUTE
CHAPEL OF OUR SAVIOUR
SOCIETY'S ADMINISTRATION OFFICES
25 SOUTH STREET, NEW YORK CITY
Telephone, Broad 297.

NORTH RIVER STATION
WEST STREET INSTITUTE
CHURCH OF THE HOLY COMFORTER
341 WEST STREET (near Houston)
Telephone, Spring 1623.

INSTITUTE TENDER, "J. HOOKER HAMERSLEY"
SUPERINTENDENT
REVEREND ARCHIBALD R. MANSFIELD, D.D.



THE "INSTITUTE"

25 South Street (corner Coenties Slip)

In view of every vessel entering the Harbor. Thirteen stories above the street and three below, of concrete, steel and brick. Ground, building and equipment cost \$1,225,000. Titanic Memorial Lighthouse Tower and Time Ball, erected by popular subscription. Flag Pole and Flags presented by Lafayette Post No. 140, G. A. R., surmounted by the weathervane, designed by J. Frederic Tams and given by Orme Wilson, Jr. Lamp at entrance presented by the Misses Augusta M. and Frances de Peyster, in memory of their father, Frederic J. de Peyster. Bronze Drinking fountain given by the Daughters of 1812, State of New York. Chapel Bell presented by Mrs. James G. Slack in memory of Francis McNeil Bacon. 13th floor Meredith Whitehouse Memorial, gift of Mr. and Mrs. Francis M. Whitehouse.

OFFICERS AND MANAGERS OF THE SOCIETY

Chosen at the *Annual Meeting*, January 24th, 1918.

Honorary President

RT. REV. DAVID H. GREER, D.D., LL.D.

President

EDMUND L. BAYLIES, 1885

Clerical Vice-Presidents

RT. REV. FREDERICK BURGESS, D.D.	REV. S. DE L. TOWNSEND, D.D.
RT. REV. EDWIN S. LINES, D.D.	REV. ERNEST M. STIRES, D.D.
RT. REV. FREDERICK COURTNEY, D.D.	REV. WILLIAM TUFTS CROCKER,
VERY REV. HOWARD CHANDLER ROBBINS,	REV. C. F. J. WRIGLEY, D.D.
D.D.	REV. CHARLES L. SLATTERY, D.D.
REV. WILLIAM T. MANNING, D.D.	REV. FRANK WARFIELD CROWDER, PH. D.
REV. HENRY LUBECK, LL.D., D.C.L.	

Lay Vice-Presidents

WILLIAM H. BUTTERWORTH, 1873	LISPENARD STEWART, 1883
JOHN H. MORRISON, 1877	J. W. MILLER, 1897
	JOHN SEELY WARD, 1902

Secretary and Treasurer

FRANK T. WARBURTON, 46 Cedar Street, 1888

Lay Managers

B. T. VAN NOSTRAND, 1887	FRANKLIN REMINGTON, 1911
JOHN A. MCKIM, 1889	J. FREDERIC TAMS, 1911
ROBERT L. HARRISON, 1901	BAYARD C. HOPPIN, 1911
AUGUSTUS N. HAND, 1902	OLIVER ISELIN, 1912
HERBERT L. SATTERLEE, 1902	VINCENT ASTOR, 1912
EDWIN A. S. BROWN, 1904	T. ASHLEY SPARKS, 1912
CHARLES A. CLARK, 1905	MARINUS W. DOMINICK, 1912
CLINTON E. BRAINE, 1905	JOHN S. ROGERS, 1913
BENJAMIN R. C. LOW, 1905	LEROY KING, 1913
GEORGE E. CUMMINGS, 1905	LOUIS GORDON HAMERSLEY, 1913
HENRY L. HOBART, 1907	CHARLES E. DUNLAP, 1915
EUGENE S. WILLARD, 1907	SAMUEL N. HINCKLEY, 1915
FRANKLIN D. ROOSEVELT, 1908	GEORGE W. BURLEIGH, 1915
AYMAR JOHNSON, 1908	EDWIN DE T. BECHTEL, 1915
ERNEST E. WHEELER, 1908	BERNON S. PRENTICE, 1915
ROBERT MCC. C. MARSH, 1908	JAMES BARBER, 1916
CHARLES W. BOWRING, 1909	JOHN J. RIKER, 1916
ORME WILSON, JR., 1910	ALLISON V. ARMOUR, 1917
WILLIAM M. POLK, M. D. 1918	

Honorary Members

WILLIAM WALDORF ASTOR, 1871	CLAYTON PLATT, 1891
FRANCIS M. WHITEHOUSE, 1917	

Superintendent

REV. ARCHIBALD R. MANSFIELD, D.D., 1896.

COMMITTEES OF THE BOARD OF MANAGERS

North River Station

GEORGE W. BURLEIGH, Chairman 52 Wall Street

SAMUEL N. HINCKLEY
HENRY L. HOBART

BAYARD C. HOPPIN
ROBERT MCC. MARSH

South Street Institute and Sub-Committees

EDMUND L. BAYLIES, Chairman, 54 Wall Street

ALLISON V. ARMOUR, Vice-Chairman.

VINCENT ASTOR	AUGUSTUS N. HAND	FRANKLIN REMINGTON
JAMES BARBER	ROBERT L. HARRISON	JOHN S. ROGERS
EDWIN DE T. BECHTEL	SAMUEL N. HINCKLEY	T. ASHLEY SPARKS
CHARLES W. BOWRING	HENRY L. HOBART	J. FREDERIC TAMS
GEORGE W. BURLEIGH	OLIVER ISELIN	B. T. VAN NOSTRAND
EDWIN A. S. BROWN	AYMAR JOHNSON	ERNEST E. WHEELER
REV. WM. TUFTS CROCKER	LEROY KING	ORME WILSON, JR.
M. W. DOMINICK	BENJAMIN R. C. LOW	EUGENE S. WILLARD
CHARLES E. DUNLAP	JOHN A. MCKIM	REV. C. F. J. WRIGLEY, D.D.
	WILLIAM M. POLK, M.D.	

Committee on the Hotel

EDMUND L. BAYLIES, Chairman, 54 Wall Street

ALLISON V. ARMOUR	AUGUSTUS N. HAND	ERNEST E. WHEELER
VINCENT ASTOR	FRANKLIN REMINGTON	ORME WILSON, JR.
CHARLES E. DUNLAP	B. T. VAN NOSTRAND	

Committee on Social Work and Entertainment

SAMUEL N. HINCKLEY, Chairman, 25 Broad Street

CHARLES E. DUNLAP	AYMAR JOHNSON	BERNON S. PRENTICE
OLIVER ISELIN	BENJAMIN R. C. LOW	EUGENE S. WILLARD

Committee on Religious Work

HENRY L. HOBART, Chairman, 120 Front Street

GEORGE W. BURLEIGH	REV. WILLIAM TUFTS CROCKER	REV. C. F. J. WRIGLEY, D.D.
EDWIN A. S. BROWN		ROBERT L. HARRISON

Committee on Educational Work, Library, etc.

M. W. DOMINICK, Chairman, Englewood, N. J.

ALLISON V. ARMOUR	LEROY KING	JOHN S. ROGERS
EDWIN DE T. BECHTEL		JOHN A. MCKIM

Committee on Shipping and on Seamen's Savings

CHARLES W. BOWRING, Chairman, 17 Battery Place

JAMES BARBER	CHARLES E. DUNLAP	J. FREDERIC TAMS
	T. ASHLEY SPARKS	

Boat and Harbor Service

J. FREDERIC TAMS, Chairman, 52 Pine Street

OLIVER ISELIN	LE ROY KING	FRANKLIN REMINGTON
AYMAR JOHNSON	LOUIS GORDON HAMERSLEY	

Legislation

EDWIN DE T. BECHTEL, Chairman, 54 Wall Street

EDMUND L. BAYLIES		ERNEST E. WHEELER
-------------------	--	-------------------

Ways and Means

HENRY L. HOBART, Chairman, 120 Front Street

ORME WILSON, JR., Vice-Chairman, 120 Broadway		
GEORGE W. BURLEIGH	ROBERT L. HARRISON	JOHN J. RIKER
CHARLES W. BOWRING	SAMUEL N. HINCKLEY	JOHN S. ROGERS
CHARLES A. CLARK	BAYARD C. HOPPIN	FRANK T. WARBURTON
	JOHN A. MCKIM	

Trust Funds

JOHN A. MCKIM, Chairman, 6 East 74th Street

ROBERT L. HARRISON		ORME WILSON, JR.
--------------------	--	------------------

Committee on "The Lookout"

EDMUND L. BAYLIES	GEORGE W. BURLEIGH	HENRY L. HOBART
-------------------	--------------------	-----------------

Attorneys for the Society

CARTER, LEDYARD & MILBURN, 54 Wall Street

Annual Report of the Board of Managers

JANUARY, 1918

The **Seamen's Church Institute of New York** during the year 1917 engaged in more activities, developed more rapidly and rendered greater service than at any time in its history. It now conducts its activities through twenty-five departments and sub-departments with the assistance of 163 employees. Its equipment consists of the large twelve story and roof extension No. 25 South Street, the North River Station at West and Houston Streets, and the tender "J. Hooker Hamersley."

The extensions to the building have been the addition of the roof or thirteenth floor through the gift of Mr. and Mrs. Francis M. Whitehouse in memory of their son; a tailor shop which has been erected on the roof of the small chapel; there have been various changes on the main floor in the enlargement of the soda fountain and the doubling of the slop chest; and during the summer months, the accommodations of the Shipping Branch of the British Consulate General were increased to twice the original size: in fact the year shows a continued and astonishing development. There have also been changes in the staff of the *Institute* during the year and 18 persons have been added.

The declaration of war found the *Institute* eager to do all in its power to aid the nation in every possible way. The services rendered will be referred to in this report.

The *Institute* has received the most generous acknowledgment of the value of its patriotic efforts.

The least this Society and all similar organizations throughout the world can do in recognition of the heroic and steadfast devotion displayed by seamen in the face of countless perils and hardships, and of death, is to see to it that ministrations of every sort, to body, mind and soul, are furnished abundantly.

This is expressed by the Archbishop of Canterbury and many leading churchmen, statesmen, and others in all parts of the world who are trying to make the world recognize, and to do justice to the *unglorified* men of the *world's merchant marine*. No men in all this dreadful war have been so exposed to danger as the *merchant seamen*. Thousands of them have laid down their lives, whose names are on no roll of honor. "One could easily become bitter if he allowed himself to think how much these men suffer and how little recognition they get."

Institute Building

Although the normal lodging capacity of the Institute is 518 nightly, the *Institute* has provided in addition 3,708 emergency lodgings. In spite of this extraordinary situation, the standard of the up-keep of the building has not been lowered in any degree. A house carpenter and a house painter with two assistants are constantly busy repairing and renovating the building.

The work at the *Hotel Desk* has become most difficult. In addition to booking 192,778 lodgings, the men at the desk have had the handling of 41,705 letters. The *Post Office* is now being segregated from the desk.

The *Baggage Department* is most successful, averaging 103 pieces checked in and 95 checked out, also 100 pieces temporarily taken out and returned *daily*. 38,844 pieces of baggage were checked in during the year. If certain store rooms had not been taken over in order to expand the Department, during the year, the business could not have been handled.

Something should be said as to the general condition of the plant. The operation of the engines, boilers, generators, the refrigerating plant, the elevators, etc., has been most satisfactory.

The public wash room shows an income of \$275.00 which means that 5514 men have made use of the pay facilities for washing their clothes.



SHIP'S BRIDGE

Some students of the Institute Navigation School on the roof, "shooting the Sun," and learning the use of the Sextant.

Shipping Department

The war has had a direct result on this Department, which has experienced a decided decrease of activity. Full crews are shipped only on very rare occasions. Few men are supplied to yachts, etc. The Department handled 446 vessels, shipped 3697 men, and furnished temporary employment to 1471 men.

Restaurant Department

The *Restaurant Department* was re-organized and an expert quick lunch man was also engaged. The effect of the re-organization has been very satisfactory in that it changed an almost continuing loss into a growing profit.

Careful buying, frequent cost tests, and increasing the volume of business have been the three principles followed in effecting the re-organization.

During the entire year 446,852 meals have been served, at the lunch counter, and in the Officers' dining room, an increase of 132,334 meals over the previous year, a daily average of 1,224 meals served.

The number of sales made at the soda fountain amounted to 276,124 an increase over last year of 95,213, and daily average of 756 sales.

"The Lookout"

The "LOOKOUT" is the voice of the *Institute*. It is a means of acquainting the friends of the *Institute* with the character, interests and needs of the seamen. Twelve issues with an average circulation of 7,000 copies monthly have been published at a net cost of \$3,508.81. As the result of appeals printed in the "LOOKOUT" throughout the year the *Institute* has received gifts from many friends.

Seamen's Wages Department

There have been 4,926 separate deposits made, amounting to \$533,459.24, an increase over last year of \$129,565.18. \$73,612.88 was transmitted, a decrease of \$30,288.55. The money order feature, owing to the War, is responsible for this decrease. Not a few of the depositors took advantage of the First and Second Liberty Loans. A total of \$7,500. was subscribed.

Printing Department

The *Institute* now has its own Printing Department. Printing was begun on a small scale early in November. During only 49 working days of 392 working hours, the total number of orders executed was 141, and the value of the work was appraised at \$515. This Department will undoubtedly grow during the coming year.

Supply Store

This Department has developed amazingly since its inception in 1914. It began as a very small supply store confined to selling in the building. It was then extended. Subsequently a Floating Department was organized selling from the "J. Hooker Hamersley" direct to the men on board vessels in the Harbor. Thereafter large stock rooms were added in the basement and on the second floor, and now there are two adjuncts, a tailor shop and a large French laundry business.

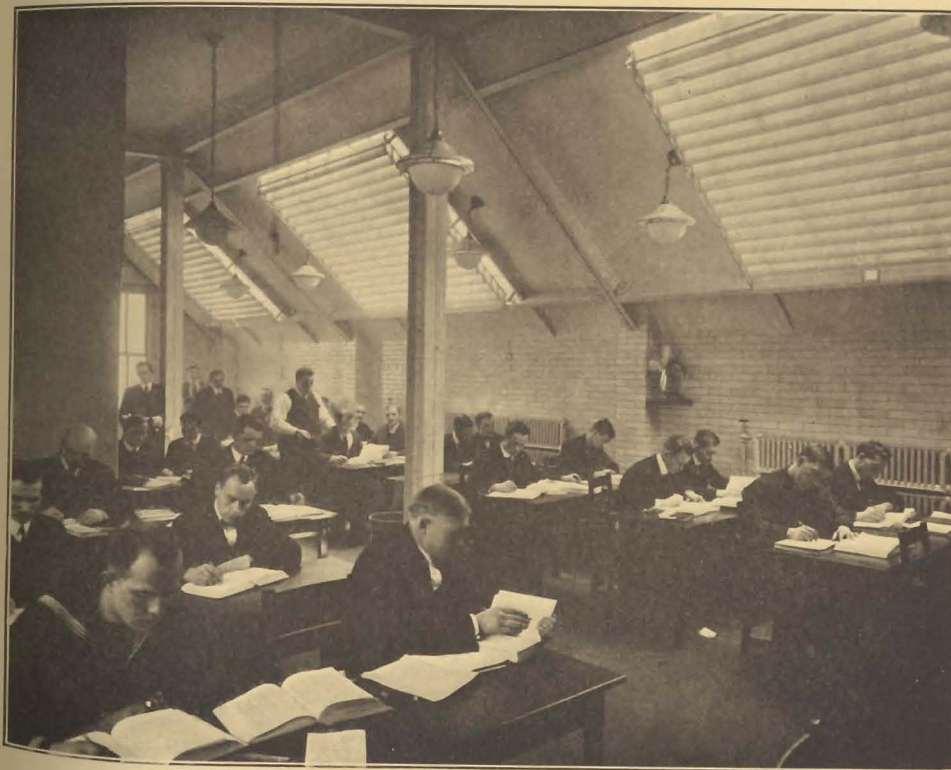
Navigation and Marine Engineering School

This School is a successor of the New York Nautical College transferred from the West Side Branch, Young Men's Christian Association. It was re-organized and took its present name on July 1st, 1916, but active work was not begun until January 1st, 1917. From January 1st to April 1st the School increased so rapidly that it became necessary to use the Auditorium in addition to the "Class Room." The latter was soon turned over to an Examining Board of the United States Navy.

About April 1st classes in signalling, seamanship, gunnery and ordinance were started in charge of volunteer instructors. Guns were loaned by the Navy Department.

About June 1st the "J. Hooker Hamersley" made her first trip beyond Sandy Hook as a school ship, the first example at this port of the use of a steamer by a private school solely for the purpose of teaching seamanship and navigation. The United States Shipping Board established free classes in the School on December 1st.

The School moved to its new quarters on the thirteenth floor of the building the middle of September. About November 1st arrange-



NAVIGATION SCHOOL
MAIN CLASS ROOM

Students qualifying to take examination for Master or Mate's license.

ments were made to turn over the "J. Hooker Hamersley" to the School for three days a week. The "Hamersley" has been slightly rearranged and equipped with standard compass, patent sounding machine, etc. 306 persons were enrolled in the Institute School during the year, and 78 were enrolled in the Shipping Board class. Some 24 students in the *Institute* School received commissions in the United States Navy.

Religious and Social Department

The work of the *Religious and Social Department* extends not only to the activities throughout the main building, but to other Stations in the City, along the water fronts, to hospitals and to vessels anchored in the Harbor. The members of the Institute staff exert a personal influence in a way which cannot be measured in influencing men of many different races, nations and creeds.

The usual services have been conducted in the Chapel of Our Saviour in the *Institute* building, and also in the Church of the Holy Comforter at the North River Station. After every Sunday evening service a "home hour" has been instituted in the auditorium, where the men gather and listen to speakers and music. These meetings have been most successful. Special services have also been conducted for various nationalities, Russians, Hollanders, etc., each according to special national customs. These services made a deep impression.

There have been many social activities throughout the year in addition to the weekly Friday concert.

We wish to make especial mention of Mrs. Janet Roper's work in Bible Class, in correspondence, answering in her peculiarly sympathetic way the hundreds of letters of inquiry about missing relatives, lifting the burden of anxious hearers, and the joy that comes to her in being able to say to some parent or loved one "your boy is safe and with us." She is the "House-Mother" and her position takes her into almost every department of the *Institute*.

Ways and Means

The country has nobly responded to the appeals of the *Institute* made during the past year on behalf of seamen. The *Institute* is under a great obligation to its friends throughout the country and throughout the world. The *Institute* is, in fact, a national and world institution. Subscriptions were received from every state in the Union. While New York State, not including New York City and Brooklyn, contributed \$7002.15, the State of Pennsylvania almost equalled that amount. Contributions were sent from the Argentine Republic, Brazil, Canada, Canal Zone, China, England, Cuba, Guatemala, Hawaii, Mexico, the Philippine Islands and San Domingo. There were 16,929 individual subscriptions.

North River Station

This has been the record year at the *North River Station* for attendance. The increased attendance was made up of young men from the naval vessels, merchant ship, etc. The work has been most satisfactory from every standpoint, but much more could be accomplished if the buildings were remodeled and adapted to its present needs.



CHURCH OF THE HOLY COMFORTER.

Houston and West Streets. Here is done a very interesting and most resultful religious work under the leadership of the Lay Manager of the North River Station, Mr. Allen S. Gookin.

Obituary

During the past year the *Society* has suffered the loss of two of its members.

Mr. Edward N. Tailer, a leading merchant of this City, who became a member of the Board in 1867 and an Honorary member in 1893, retained a deep and active interest in the progress and work of the Society until the end of his life.

Mr. Henry Lewis Morris, a well known lawyer who had been a faithful and useful member of this Board since 1868, a period of fifty years. He was elected a Lay Vice-President in 1902, he was a member of the Building Committee which raised the funds for and had charge of the erection of the *Institute* building on the corner of South Street and Coenties Slip. He was one of the original members of the General Convention Commission for Seamen, now known as the **Seamen's Church Institute of America**.

GENERAL SUMMARY OF WORK

ALL STATIONS AND DEPARTMENTS, JANUARY 1, 1917 TO DECEMBER 31, 1917.
Submitted by the REV. ARCHIBALD R. MANSFIELD, D.D., Superintendent

SEAMEN'S WAGES DEPARTMENT.

Number of Deposits	4,926	Amount of Transmissions	\$ 73,612.88
Number of Transmissions	1,149	Countries to which money has been sent	51
Home Countries of Depositors	73	Signatures witnessed by our Notary Public	423
Amount of Deposits	\$533,459.24		

SHIPPING DEPARTMENT.

Number of vessels to which crews or part of crews have been furnished	446	Men provided with employ- ment, temporary, ship or other	1,471
Men signed and shipped	3,697	Total number of men provided with employment	5,168

BOAT AND HARBOR SERVICE, TENDER, "J. HOOKER HAMERSLEY"

Trips made	415	Vessels visited	882
Men transported	2,010	Dunnage transported	3,574

RESTAURANT, HOTEL, POST OFFICE, DUNNAGE AND SLOP CHEST DEPARTMENTS.

Meals served	446,852	Pieces of mail received for sea- men	41,705
No. of sales at Soda Fountain	276,124	Pieces of dunnage checked	38,844
Lodgings registered	192,778	Sales at Slop Chest	22,017

RELIGIOUS AND SOCIAL DEPARTMENT.

English Services	290	Attendance	12,245
Scandinavian Services	79	Attendance	1,204
Scandinavian Welfare Meetings	43	Attendance	596
Lettish Services	15	Attendance	251
Russian Services	2	Attendance	37
Holland Services	9	Attendance	119
Baptisms 21	Marriages 12	Funerals	27
Communion Services (Public and Private)			41
Bible Class Meetings	37	Attendance	1,969
Sing Song Services	68	Attendance	6,767
Entertainments (Season Oct. to May)	36	Attendance	14,249
Special Summer Concerts	12	Attendance	3,132
Comfort Bags, knitted articles	909	Packages reading matter distri- buted	4,613
Christmas Gifts distributed	800	Visits to Vessels	2,972

EDUCATIONAL DEPARTMENT.

First Aid Lectures	36	Attendance	490
Board of Education Public School Lectures	29	Attendance	3,792
Noonday Educational and In- spirational Talks	52	Attendance	6,902
Students enrolled in Naviga- tion and Marine Engineering School	384	Number of cruises made on the "Hamersley" for practical instruction	36
Number of Students receiving Commissions	24	Attendance	576

RELIEF DEPARTMENT.

Aided from Morrill, Morgan and Bourne and other Funds Sent to Legal Aid and other Societies	2,704	Visits to Hospitals	297
		Sent to Hospital and Dispen- saries	580
	196	Visits to Patients	4,864

TREASURER'S ANNUAL STATEMENT

January 1, 1917 to December 31, 1917

INCOME

Revenue from Outside Sources:	
Subscriptions and Donations	\$82,400.57
Church Offerings	3,049.97
Collections on Ships	357.54
Income from Invested Funds	6,045.47
	\$91,853.55
Revenue from Institute Activities:	
Hotel (including Lodgings, Barber Shop, Baggage Room), Restaurant, Soda Fountain, Slop Chest, Shipping and Printing Departments; Navigation and Marine Engineering School	\$193,852.97
North River Station	295.34
Rent, British Consulate General Shipping Branch	1,529.38
Miscellaneous	9,691.55
	\$297,222.79

EXPENDITURES

Institute Building, 25 South Street:	
Religious and Social Work	\$16,186.38
Salaries of Superintendent and Staff, Wages of Em- ployees in all other departments; also supplies for Hotel, Restaurant, Engine Room, Slop Chest, Navigation and Marine Engineering School, Printing Department etc.	236,045.03
Institute Boat "J. Hooker Hamersley" and Shipping Department, Salaries and Expenses	11,492.15
"The Lookout": Salaries, Printing and Postage	4,212.06
North River Station: Salaries, Expenses, Repairs	6,144.29
To Repairs and Replacement Fund	7,000.00
Building Equipment, Repairs and Replacements	8,843.65
Balance	7,299.23
	\$297,222.79

FRANK T. WARBURTON, Treasurer.

Morrill, Morgan and Bourne Fund

RECEIPTS.		PAYMENTS.	
Balance on hand, Jan. 1, 1917	\$757.37	Paid Rev. A. R. Mansfield, D. D., for the purposes of the funds	\$1,782.45
Income from Invested Funds	1,025.89	Balance on hand, Dec. 31, 1917	8.11
Interest earned in bank	7.30		\$1,790.56
	\$1,790.56		

Roxy M. Smith Fund

Receipts	\$ 99.00
Payments (Income to Religious and Social Department)	99.00
	Balance, December 31, 1917

Cemetery Plot and Burial Fund

<i>Used for burial of destitute seamen and upkeep of burial plot in the Evergreens.</i>	
Balance on hand, January 1, 1917	\$ 844.47
Receipts	955.27
	\$1,799.74
Payments	888.71
	Balance on hand, Dec. 31, 1917
	\$911.03

FRANK T. WARBURTON, Treasurer.

COMMITTEE ON TRUST FUNDS

SUMMARY

ASSETS

Railroad Securities, etc.,	\$ 78,476.12	
Bonds and Mortgages,	74,000.00	
Real Estate: 52 Market Street,	\$ 7,000.00	
43, 45, 47, Front Street	41,131.23	48,131.23
Cash on deposit: Emigrant Industrial Savings Bank,	250.00	
N. Y. Life Insurance & Trust Co.,	4,478.92	4,728.92
		<u>\$205,336.27</u>

PERMANENT FUND: Income to be applied to the general uses of the Society,

Balance, last report,	\$97,034.54	
Legacy, Agnes DuBois Phillips,	\$1,000.00	
" Mary A. Sutton,	250.00	
James Barber Trust, Income	1,250.00	
Profit on bonds sold, Atchinson 4's	31.26	2,531.26
		<u>\$99,565.80</u>

WILLIAM WALDORF ASTOR FUND: Income to be applied first to the support of missionary at East River Station, and afterwards to the maintenance of any missionaries employed by the Society, 50,702.00

CHARLES E. RHINELANDER FUND: In memory of his wife, Matilda F. Rhineland. Income to be applied to the general uses of the Society, 25,000.00

Funds For Special Purposes

DAVENPORT FUND: Income to be applied to the purchase of books for distribution among seamen, 2,000.00

MORRILL FOUNDATION: In memoriam of the late Captain Charles Montgomery Morrill. Income to be applied exclusively to the relief of destitute mariners and those dependent upon them who may have been left destitute by their death while following the sea, 17,831.25

HOSIER MORGAN FUND: Income to be used in common with that of the Morrill Foundation Fund, 1,735.27

EMILY H. BOURNE FUND: Income to be used in common with that of the Morrill Foundation Fund, 5,000.00

SEAMEN'S RELIEF FUND: Income to be used in common with that of the Morrill Foundation Fund, 751.95

"C. A. R." MEMORIAL FUND: Income to be used for some needy object, 500.00

ROXY M. SMITH FUND: In memory of her husband, W. V. R. Smith. Income to be applied to giving annually an entertainment for seamen on the birthday of W. V. R. Smith, August 2nd, 2,000.00

CAPT. WILLIAM WILSON OWEN MEMORIAL FUND: Income to be applied to the use of destitute sailors under the care of the Institute, 250.00

\$205,336.27

INCOME.

Received from mortgages,	\$3,650.00
Received from railroad securities,	3,486.16
Received from N. Y. Life Insurance & Trust Co.,	144.65
	<u>\$7,280.81</u>

Less income account overdrawn in 1917:

Rhineland. Fund,	\$ 165.08	
"C. A. R." Memorial Fund,19	165.27
		<u>\$7,115.54</u>

Distributed as follows:

Permanent Fund,	Paid Treasurer, \$2,906.42	
Astor Fund,	" " 1,882.27	
Rhineland. Fund,	" " 957.22	
Davenport Fund,	" " 75.64	\$5,821.55

Smith Fund,	" " 99.00	
Morrill Foundation Fund,	" " 693.73	
Hosier Morgan Fund,	" " 65.53	
Bourne Fund,	" " 247.50	
Seamen's Relief Fund,	" " 32.02	
"C. A. R." Memorial Fund,	" " 21.11	
		<u>\$1,059.89</u>

Astor Fund, transferred to Sinking Fund,	58.50	
New York Life Insurance & Trust Co., Commissions,	76.60	135.10
		<u>\$7,115.54</u>

Dated, New York, January 16th, 1918.



Public Lobby first floor.
Soda Fountain on left and Hotel Desk
on right.

JOHN A. MCKIM,
ORME WILSON, JR.
ROBERT L. HARRISON,
Committee on Trust Funds.

Securities examined and found
to agree with the above account.

ALLISON V. ARMOUR,
SAMUEL N. HINCKLEY,
Auditing Committee.

Seventeenth Annual Report of the Seamen's Benefit Society

This Society, composed of women, was organized in 1900 for the purpose of assisting the men and boys of the Sea in every possible way, through the Seamen's Church Institute. Its Officers then and now are Miss Catharine S. Leverich, *President*, Miss Augusta M. de Peyster, *Secretary*, and Mrs. George A. Lung, *Treasurer*. The Society during its existence has raised approximately \$22,800, of which about \$8,350 has been expended through the *Superintendent* of the *Institute* for entertainments of various kinds, and especially for maintaining the social work among the *British Apprentice Lads*. A little over \$11,000 of the above sum was contributed towards the purchase price, rebuilding, repairs, salaries, etc., of the Institute's first boat, the "Sentinel," which was sold the latter part of 1914 and was succeeded by the present boat, the "J. Hooker Hamersley." The balance, about \$3,000 of the total amount contributed, was subscribed to the Building Fund of the present *Institute*. The construction and equipment of the Apprentice Boys' Room in the new building were paid for by the Seamen's Benefit Society. Among other things the *Society* presented to the *Institute* in 1903, its first House Flag; in 1904 it installed a successful Coffee Bar in the Battery Station building at No. 1 State Street and established lecture courses on First Aid to the Injured. The *Society* gave two of the Seamen's bedrooms in memory of the Officers and Crew of the "Titanic," and the fund for the Light House Tower, which was erected to the memory of all who lost their lives on the "Titanic," was collected by the Seamen's Benefit Society, assisted by the American Scenic and Historic Preservation Society. We greatly rejoice that our Active and Associate members and their friends have enable us to accomplish through the *Institute* so much for the men and boys of the World's Merchant Marine.

During all these years the members and their friends have continued to send to the *Institute* money for tea and theatre parties, picnics, knitted articles, comfort bags, cast-off clothing, games, reading matter, towels, sheets, pillow cases, flowers, etc., for the apprentice lads, and the *Institute*.

During the year 1917 we have provided funds for maintaining the Sunday and Thursday evening teas for the apprentice lads and for a number of entertainments. It was with great satisfaction and pleasure that we were able to present to the *Institute* a very handsome four hundred and fifty dollar player piano for use in the Apprentice Boy Room. Our members and other friends have as usual sent to the *Institute* generous gifts of those things referred to above. The Lenten Sewing Class made and sent for use at the *Institute* over three hundred huck and crash towels.

We are profoundly grateful to all who have cooperated with us in our work for these men and boys of the Sea who never before have so much needed our sympathy and help.

AUGUSTA M. DE PEYSTER, *Secretary*.

December, 1917.



THE TENDER "J. HOOKER HAMERSLEY"

Presented to the Society on January 3, 1915 by Louis Gordon Hamersley
in memory of his Father.
Designed by Tams, Lemoine & Crane, and built by the W. R. Osborn Estate.
During the year 1917, 415 trips were made, 2010 persons and 3574 pieces of dunnage
were transported.
Especially equipped and used for practical instruction in Navigation.

SEAMEN'S BENEFIT SOCIETY IN ACCOUNT WITH H. VAN C. LUNG, TREASURER

DECEMBER 1, 1916 TO DECEMBER 1, 1917.

To Cash Received:	To Cash Paid:
By Balance, as per last report \$ 267.57	Rev. A. R. Mansfield, D.D.,
Membership dues 334.00	for Social Work \$ 352.26
Proceeds of Lenten Sewing	Player Piano 450.00
Class 1916 281.00	
Proceeds of Lenten Sewing	Exchange on checks04
Class 1917 156.56	Balance, December 1, 1917 237.98
Interest on deposits 1.15	
	\$1,040.28
	\$1,040.28

H. VAN C. LUNG, *Treasurer*.

SEAMEN'S BENEFIT SOCIETY

Officers

MISS CATHARINE S. LEVERICH, *President* MRS. GEORGE A. LUNG, *Treasurer*
 MISS AUGUSTA M. DE PEYSTER, *Secretary*.

Active Members

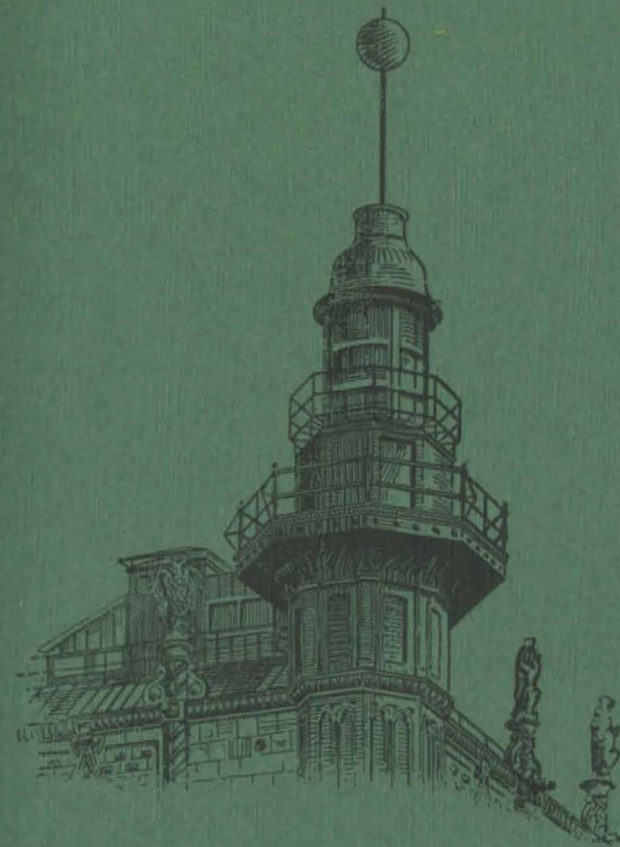
MISS JOSEPHINE L. BEEKMAN	MISS EDITH VAN C. JAY
MRS. ARTHUR COPPELL	MISS MARGARET D. LEVERICH
MRS. F. ASHTON DE PEYSTER	MRS. HOWARD T. MARTIN
MISS FRANCES C. DE PEYSTER	MRS. ROBERT B. MINIS
MISS ISABEL M. GREGORY	MRS. JOSEPH FERRIS SIMMONS
MRS. RYDER HENRY	MISS EMILY B. VAN AMRINGE
MRS. SAMUEL N. HINCKLEY	MISS ETHEL ZABRISKIE

Associate Members

MRS. EDWARD N. BREITUNG	MRS. WOODBURY G. LANGDON
MRS. EDMUND L. BAYLIES	MRS. EDWARD D. LEVERICH
MISS LOUISA H. BARNARD	MRS. LEA McI. LUQUER
MRS. J. J. BLODGETT	MRS. J. I. MOUNT
MR. ALEXANDER JAY BRUEN	MRS. ALFRED T. MAHAN
MRS. ANDREW CARNEGIE	MRS. HENRY LEWIS MORRIS
MISS ANNIE CLARKSON	MRS. NEWBOLD MORRIS
MRS. HAMILTON F. DOWNING	MRS. MEANY
MRS. JAMES MAY DUANE	MRS. ALFRED DUANE PELL
MISS KATHARINE DU BOIS	MRS. ALBERT E. PUTMAN
MRS. JOHN R. DELAFIELD	MRS. JOHN H. PRALL
MRS. HAMILTON FISH	MRS. WILLIAM M. PURDY
MRS. ANSON R. FLOWER	MRS. WILLIAM LOWE RICE
MRS. ELBERT H. GARY	MRS. FRANKLIN D. ROOSEVELT
MRS. WILLIAM PIERSON HAMILTON	MRS. JAMES ROOSEVELT
MRS. ANSON W. HARD, JR.	MRS. HERBERT L. SATTERLEE
MRS. ROBERT HOE	MRS. EDWIN B. SHELDON
MISS SARAH L. HORN	MRS. EDWARD B. SEXTON
MRS. E. DE P. HOSMER	MRS. EDWARD SPARROW
MRS. FRANK LONDON HUMPHREYS	MRS. CHARLES FEARING SWAN
MISS MARGARET A. JACKSON	MISS ELIZABETH M. VAN WINKLE
MISS LUCY H. KEAN	MRS. PATRICK A. VALENTINE
MRS. RUTHERFORD KEARNY	MRS. WILLIAM E. VERMILYE
MISS CORNELIA KIRBY	MRS. LAWRENCE WELLS
MISS EDITH KING	MISS CAROLINE WHITE
MRS. JOSEPH T. LOW	MISS MAY W. WHITE
MRS. SETH LOW	MRS. M. P. WELCHER
MRS. WILLIAM G. LOW	

Honorary Members

C. CLIVE BAYLEY, H. B. M. Consul General, Great Britain
 H. SPARKER, Consul General, The Netherlands
 S. CARRARA, Consul General, Italy
 C. RAVN, Consul General, Norway
 RT. REV. DAVID H. GREER, D.D., LL.D.
 RT. REV. CHARLES S. BURCH, D.D.



TITANIC MEMORIAL LIGHTHOUSE TOWER

Time Ball drops daily, exact noon. *Green Light* burns nightly. Three Cooper Hewitt Quartz lamps each 2,500 candle power.

Form of Bequest

I give and bequeath to the "SEAMEN'S CHURCH INSTITUTE OF NEW YORK," a corporation incorporated under the laws of the State of New York, the sum of..... Dollars, to be used by it for its corporate purposes.

Donations should be sent to

FRANK T. WARBURTON, TREASURER,

25 SOUTH STREET, NEW YORK, N. Y.