

SEAMEN'S  
CHURCH INSTITUTE  
OF NEW YORK



SEVENTIETH  
ANNUAL REPORT  
DECEMBER 31<sup>st</sup> 1914

SEVENTIETH ANNUAL  
REPORT OF THE BOARD  
OF MANAGERS OF THE

SEAMEN'S CHURCH  
INSTITUTE

FOR THE YEAR ENDING  
DECEMBER 31, 1914

PRESENTED AT  
THE ANNUAL MEETING OF THE SOCIETY  
WEDNESDAY, JANUARY 20, 1915



NEW BUILDING AND HEADQUARTERS  
25 South Street (corner Coenties Slip)

Built on ground 113 by 91 feet, in view of every vessel entering the Harbor. Twelve stories above the street and three below, of concrete, steel and brick. Ground, building and equipment cost \$1,150,000. Titanic Memorial Lighthouse Tower and Time Ball, erected by popular subscription. Flag Pole and Flags presented by Lafayette Post No. 140, G. A. R., surmounted by the weather-vane, designed by J. Frederic Tams and given by Orme Wilson, Jr. Lamp at entrance presented by the Misses Augusta M. and Frances de Peyster, in memory of their father, Frederic J. de Peyster.

## STATIONS OF THE SOCIETY

---

SOUTH STREET INSTITUTE AND THE  
CHAPEL OF OUR SAVIOUR

25 SOUTH STREET  
(three blocks from South Ferry)

---

NORTH RIVER STATION  
WEST STREET INSTITUTE AND CHURCH OF  
THE HOLY COMFORTER

341 WEST STREET  
(Foot of West Houston Street)  
Telephone, 1623 Spring

---

INSTITUTE TENDER "J. HOOKER HAMERSLEY"

---

ADMINISTRATION OFFICES

25 SOUTH STREET - - - TELEPHONE, 297 BROAD

REV. ARCHIBALD R. MANSFIELD  
Superintendent

REV. CHARLES P. DEEMS  
Assistant Superintendent

## OFFICERS AND MANAGERS OF THE SOCIETY

Chosen at the Annual Meeting, January 20, 1915

### Honorary President

RT. REV. DAVID H. GREER, D.D., LL.D.

### President

EDMUND L. BAYLIES, 1885

### Clerical Vice-Presidents

|                                   |                                 |
|-----------------------------------|---------------------------------|
| RT. REV. FREDERICK BURGESS, D.D.  | REV. S. DEL. TOWNSEND, D.D.     |
| RT. REV. EDWIN S. LINES, D.D.     | REV. ERNEST M. STIRES, D.D.     |
| RT. REV. FREDERICK COURTNEY, D.D. | REV. PERCY STICKNEY GRANT, D.D. |
| REV. WILLIAM T. MANNING, D.D.     | REV. WILLIAM TUFTS CROCKER      |
| REV. HENRY LUBECK, LL.D., D.C.L.  | REV. C. F. J. WRIGLEY, D.D.     |
| REV. WILLIAM M. GROSVENOR, D.D.   | REV. CHARLES L. SLATTERY, D.D.  |

### Lay Vice-Presidents

|                          |                              |
|--------------------------|------------------------------|
| HENRY LEWIS MORRIS, 1868 | WILLIAM H. BUTTERWORTH, 1873 |
| LISPENARD STEWART, 1883  |                              |

### Secretary and Treasurer

FRANK T. WARBURTON, 68 William Street, 1888

### Lay Managers

|                             |                              |
|-----------------------------|------------------------------|
| JOHN H. MORRISON, 1877      | ERNEST E. WHEELER, 1908      |
| B. T. VAN NOSTRAND, 1887    | ROBERT McC. MARSH, 1908      |
| JOHN A. MCKIM, 1889         | CHARLES W. BOWRING, 1909     |
| J. W. MILLER, 1897          | ORME WILSON, JR., 1910       |
| ROBERT L. HARRISON, 1901    | FRANKLIN REMINGTON, 1911     |
| JOHN SEELY WARD, 1902       | J. FREDERIC TAMS, 1911       |
| AUGUSTUS N. HAND, 1902      | BAYARD C. HOPPIN, 1911       |
| HERBERT L. SATTERLEE, 1902  | OLIVER ISELIN, 1912          |
| EDWIN A. S. BROWN, 1904     | VINCENT ASTOR, 1912          |
| CHARLES A. CLARK, 1905      | T. ASHLEY SPARKS, 1912       |
| CLINTON E. BRAINE, 1905     | M. W. DOMINICK, 1912         |
| BENJAMIN R. C. LOW, 1905    | JOHN S. ROGERS, 1913         |
| GEORGE E. CUMMINGS, 1905    | LEROY KING, 1913             |
| HERBERT BARBER, 1905        | LOUIS GORDON HAMERSLEY, 1913 |
| HENRY L. HOBART, 1907       | CHARLES E. DUNLAP, 1915      |
| EUGENE S. WILLARD, 1907     | SAMUEL N. HINCKLEY, 1915     |
| FRANKLIN D. ROOSEVELT, 1908 | GEORGE W. BURLEIGH, 1915     |
| AYMAR JOHNSON, 1908         | ANSON W. HARD, JR., 1915     |

### Honorary Members

|                             |                     |
|-----------------------------|---------------------|
| EDWARD N. TAILER, 1867      | CLAYTON PLATT, 1891 |
| WILLIAM WALDORF ASTOR, 1871 | W. R. BELL, 1894    |

### Superintendent

REV. ARCHIBALD R. MANSFIELD

### Assistant Superintendent

REV. CHARLES P. DEEMS

## COMMITTEES OF THE BOARD OF MANAGERS

### North River Station

|                                       |              |                   |
|---------------------------------------|--------------|-------------------|
| JOHN SEELY WARD, Chairman, 1 Broadway |              | HENRY L. HOBART   |
| WILLIAM H. BUTTERWORTH                | J. W. MILLER | ROBERT McC. MARSH |
| GEORGE W. BURLEIGH                    |              |                   |

### South Street Institute and Sub-Committees

|   |                    |                             |
|---|--------------------|-----------------------------|
| EDMUND L. BAYLIES, Chairman, 54 Wall Street |                    |                             |
| ERNEST E. WHEELER, Vice-Chairman            |                    |                             |
| VINCENT ASTOR                               | ANSON W. HARD, JR. | FRANKLIN REMINGTON          |
| HERBERT BARBER                              | ROBERT L. HARRISON | JOHN S. ROGERS              |
| CHARLES W. BOWRING                          | SAMUEL N. HINCKLEY | T. ASHLEY SPARKS            |
| GEORGE W. BURLEIGH                          | HENRY L. HOBART    | J. FREDERIC TAMS            |
| EDWIN A. S. BROWN                           | OLIVER ISELIN      | B. T. VAN NOSTRAND          |
| REV. WM. TUFTS CROCKER                      | AYMAR JOHNSON      | ORME WILSON, JR.            |
| M. W. DOMINICK                              | LEROY KING         | EUGENE S. WILLARD           |
| CHARLES E. DUNLAP                           | BENJAMIN R. C. LOW | REV. C. F. J. WRIGLEY, D.D. |
| AUGUSTUS N. HAND                            | JOHN A. MCKIM      |                             |

### Committee on Social Work and Entertainment

|   |                                       |
|---|---------------------------------------|
| EDMUND L. BAYLIES, Chairman, 54 Wall Street | AYMAR JOHNSON, Chairman, 111 Broadway |
| VINCENT ASTOR                               | OLIVER ISELIN                         |
| ERNEST E. WHEELER                           | CHARLES E. DUNLAP                     |
| B. T. VAN NOSTRAND                          | EUGENE S. WILLARD                     |
| AUGUSTUS N. HAND                            | SAMUEL N. HINCKLEY                    |
| ORME WILSON, JR.                            | ANSON W. HARD, JR.                    |
| CHARLES E. DUNLAP                           | BENJAMIN R. C. LOW                    |
| FRANKLIN REMINGTON                          |                                       |

### Committee on Religious Work

|   |                    |                    |
|---|--------------------|--------------------|
| HENRY L. HOBART, Chairman, 120 Front Street |                    |                    |
| REV. WILLIAM TUFTS CROCKER                  |                    | ROBERT L. HARRISON |
| REV. C. F. J. WRIGLEY, D.D.                 | GEORGE W. BURLEIGH | EDWIN A. S. BROWN  |

### Committee on Educational Work, Library, etc.

M.W. DOMINICK, Chairman, Englewood, N. J.

|                    |
|--------------------|
| JOHN S. ROGERS     |
| JOHN A. MCKIM      |
| ANSON W. HARD, JR. |
| LEROY KING         |

### Committee on Shipping and on Seamen's Savings

HERBERT BARBER, Chairman, 17 Battery Place

|                    |
|--------------------|
| CHARLES W. BOWRING |
| T. ASHLEY SPARKS   |
| J. FREDERIC TAMS   |
| CHARLES E. DUNLAP  |

### Boat and Harbor Service

|  |               |            |                        |
|--|---------------|------------|------------------------|
| J. FREDERIC TAMS, Chairman, 52 Pine Street |               |            |                        |
| OLIVER ISELIN                              | AYMAR JOHNSON | LEROY KING | LOUIS GORDON HAMERSLEY |

### Legislation

|  |  |                   |
|--|--|-------------------|
| ERNEST E. WHEELER, Chairman, 2 Rector Street |  |                   |
| EDMUND L. BAYLIES                            |  | ROBERT McC. MARSH |

### Ways and Means

|   |                  |                    |
|---|------------------|--------------------|
| HENRY L. HOBART, Chairman, 120 Front Street |                  |                    |
| FRANK T. WARBURTON                          | ORME WILSON, JR. | JOHN S. ROGERS     |
| BAYARD C. HOPPIN                            | CHARLES A. CLARK | CHARLES W. BOWRING |
| ROBERT L. HARRISON                          | JOHN SEELY WARD  | GEORGE E. CUMMINGS |

### Trust Funds

|   |                 |                  |
|---|-----------------|------------------|
| JOHN A. MCKIM, Chairman, 6 East 74th Street |                 |                  |
| ROBERT L. HARRISON                          | JOHN SEELY WARD | ORME WILSON, JR. |

### Attorney for the Society

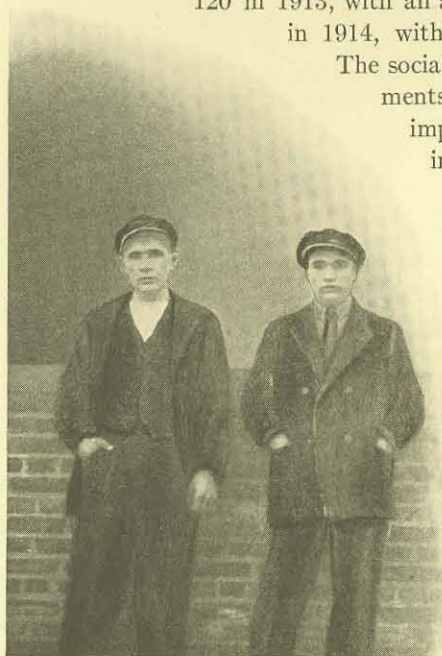
EDMUND L. BAYLIES, 54 Wall Street

## ANNUAL REPORT OF THE BOARD OF MANAGERS

The year 1914 has been one of most unusual interest in the history of the Institute, for the reason that it has been the first complete year of operation of the new building at 25 South Street, and of conducting the work of the Institute from that point as a center. A comparison of the General Summary of the work for 1914, which is submitted as a part of this report, with the corresponding summary for the year from December 1, 1912, to December 1, 1913, shows a very marked increase in the service rendered by the Society. This applies not only to the departments which are either altogether new or equipped with such greatly superior facilities as to be substantially new, but also to others where the existing facilities have merely been put to a more extended use. For example, the amount of deposits in the Savings Department received from seamen in the year ending December 1, 1913, was \$137,951.99; in 1914 it was \$210,524.24. The total number of men provided with employment in 1913, either on ships or ashore, was 3,182; in 1914 it was 4,377. In the religious department, through the use of the new chapel, the number of services in all languages increased from 120 in 1913, with an aggregate attendance of 5,579, to 527 in 1914, with an aggregate attendance of 22,756.

The social entertainments and the hotel departments are features of the very greatest importance, as appears from the interesting figures tabulating their activities.

This extraordinary increase in the usefulness of the Institute would have been impossible without the new building, the expediency of the undertaking of which has thus been fully proved. There still remains to be paid on the building, however, about \$250,000, of which \$100,000 has been promised if the balance can be raised, and the friends of the Institute are appealed to to provide the funds to wipe out this debt and remove the burden of the interest charge which it carries. In this connection it may be of interest to state that the purely hotel



FAITHFUL WITNESSES

Two Russian sailors whose steadfast loyalty to the Institute's cause sent two crimps to jail.

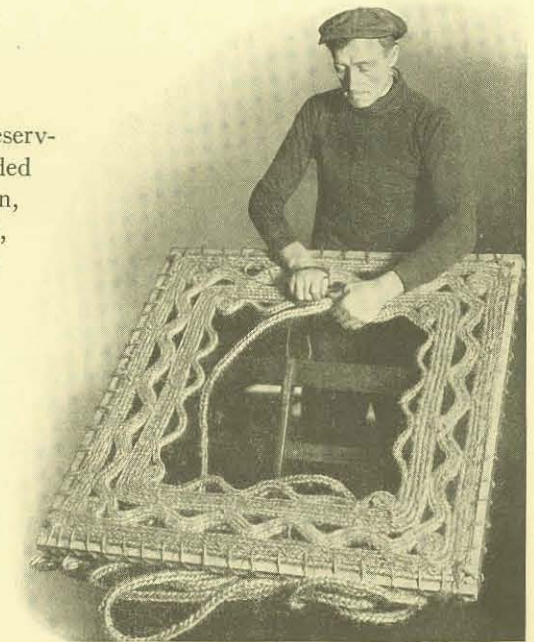
features of the Institute building are paying their own expenses, and that the reliance of the Institute on its friends for contributions for general purposes is in order to carry on the religious and relief work which are the Society's fundamental cares.

### Religious Services

The cheerful and hospitable atmosphere of the new chapel has attracted men in large numbers to receive the inspiration and comfort of the religious services which have been conducted there not only in English but in the native tongues of many foreign sojourners in our port. Through an enlargement of the clerical staff and special arrangements with neighboring parishes, services have been regularly conducted in the Swedish, Danish, Spanish, German and Lettish languages, and plans have been completed for additional services in Dutch. The ships in the harbor have not been neglected, and the usual services have also been continued in the Church of the Holy Comforter, at the Society's North River Station, at the foot of West Houston Street.

### Relief Work

An increased number of deserving seamen have been aided through the Morrill, Morgan, Bourne and other funds, and, where medical attention has been needed, have been assisted to the hospitals and dispensaries. The problem of unemployment is making itself felt among seafaring men, as well as others, and is receiving particular attention. For example, in February, 1914, we arranged temporary work for three hundred and twenty-five (325) men in assisting in cleaning the city streets of snow. The Institute's policy has been to help men help them-



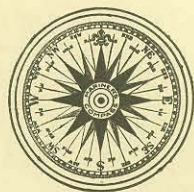
INDUSTRIAL RELIEF WORK

For nearly three months, when the demand for relief was heaviest, 395 destitute seamen were given a week's work each, making rope mats for four hours a day. They were provided with food and lodging and opportunities for securing employment.

selves, rather than to give something for nothing. As self-help results in self-respect, this policy is making a very distinct and desirable impression.

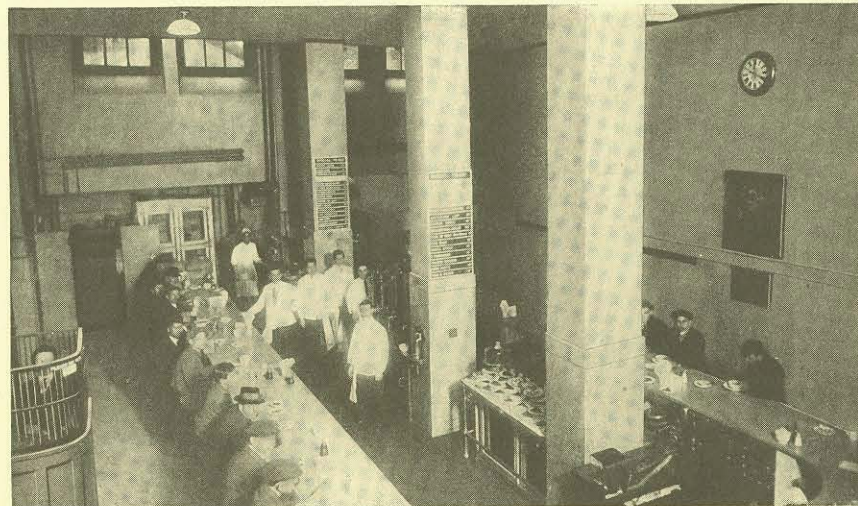
### Savings Department

In an ever-increasing amount the wages of the sailors paid in the port of New York are being deposited with us instead of being improvidently squandered or permitted to be taken in the dark and devious ways long practiced by those who make a business of relieving the seaman of his money. Of the amounts received a good part is forwarded by us to wives and families residing all over the world; the balance is held subject to the orders of the owners.



THE CROWD IN THE PUBLIC LOBBY

Adjoining this lobby are the hotel desk and post office, the lunch counter, sitting room and the Chapels. In the center, on the floor, is inlaid a very beautifully designed compass six feet in diameter, given by Mrs. Richard T. Auchmuty.



LUNCH COUNTER

Given in memory of Rear Admiral Henry Erben, U. S. A.

As many as 1,164 meals, averaging thirteen cents each, have been served in one day. "Table d'Hote" meals, comprising choice of soup, roast meats, vegetables and dessert, can be obtained for twenty-five cents. Combination meals are also served at prices from five cents up.

### Lodging and Restaurant

The number of beds supplied and occupied in the South Street building during the year has averaged 446 each night, at a price of from fifteen to twenty-five cents for seamen and from fifty to sixty-five cents for officers. The direct income from this source during the month of November (not an exceptional month) was \$3,432.05, which, added to the receipts of the barber shop, washroom and other branches of the hotel department, yielded a net profit of about \$375, after deducting the direct cost of operation. The demand for restaurant facilities compelled us to open the lunch counter much earlier in the year than had been expected, and though figures for an entire twelve months' period are not yet available, this department also is yielding a slight net income available for carrying on other work. The soda fountain was opened early and has proved a popular competitor of the waterfront saloons.

### Social Department

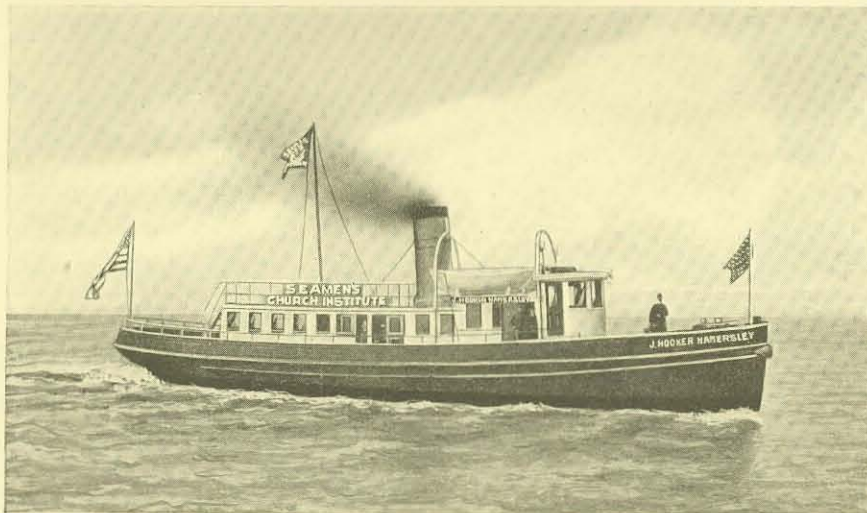
The reading and game rooms have been constantly crowded. In the auditorium 126 entertainments have been given, including lectures, picture shows and plays.

## Baggage Department

An account of the serviceable functions of the Institute would be incomplete without special mention of the Baggage Department. Large store-rooms are provided in the basement of the building where the sailor ashore may, for a small sum, check his dunnage, comprising often his entire worldly goods; the practical value of this safe deposit system is incalculable. During the past year 20,258 pieces of dunnage have been checked.

## Harbor Boat

The Boat and Harbor Service will hereafter be carried on by means of our new tender, the "J. Hooker Hamersley," the gift of Mr. Louis Gordon Hamersley in memory of his father, which will soon be dedicated and put in commission. For over eleven years the launch "Sentinel" has carried the flag of the Institute to welcome incoming ships and remind the sailors that friends are awaiting them. Now her time has come to give way to a faster, stronger boat, which will continue the work, bear the chaplains and representatives of



THE TENDER "J. HOOKER HAMERSLEY"

Presented to the Society on January 3, 1915, by Louis Gordon Hamersley in memory of his father

Designed by Tams, Lemoine & Crane, and built by the W. R. Osborn Estate. Her predecessor, the "Sentinel," in 1914 made 416 trips, transported 2,166 persons and 4,182 pieces of dunnage.



AUDITORIUM

Presented by Mrs. Roxy M. Smith in memory of her husband, William Van Rensselaer Smith

Concerts, motion picture shows, lectures, educational and entertaining, are provided almost nightly for eight months in the year. Two entertainments annually on anniversary occasions are made possible by income from an endowment given by Mrs. Smith.

the Institute to the sick and homeless on the ships at anchor, and transport to the Institute building the men who wish to make it their temporary abode. It is fitting to record here that nearly one-fourth of the total cost of the "Sentinel" during her career of eleven years, including about two-thirds of the original purchase price, was contributed by the Seamen's Benefit Society, an organization of ladies who have been among the Institute's most loyal and helpful friends.

## Shipping Bureau

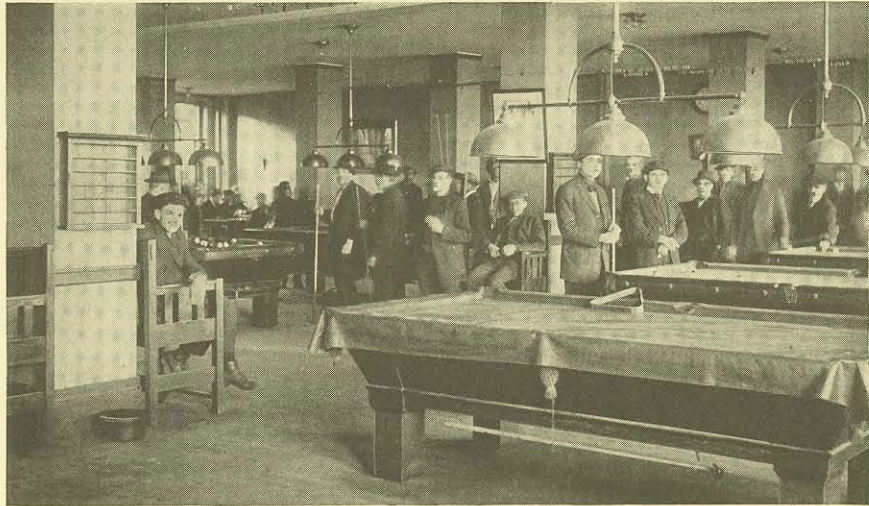
It is well known that one of the worst abuses of seafaring life has been in the methods of gathering crews; from "shanghai-ing" to the exacting of illegal bonuses. The Institute has for years carried on a persistent and effective fight against those methods, and in that connection maintains a Shipping Bureau, free to all seamen, which has the hearty support of many of the most important steamship lines. During the past year 3,341 men have been provided with places on 496 ships. We have found additional shore employment for 1,036.

## North River Station

The work in the new building has not been allowed to interfere with that conducted at the foot of West Houston Street for the special benefit of the men of the lines docking in the North River. The reading rooms have been much used, the entertainments well attended, and the visits to ships continued as usual.

### Legislation

Since the last annual report the Society has advocated the enactment of legislation placing all persons engaged in the business of procuring employment for seamen under Federal supervision. We have also supported those provisions of the Seamen's bill now before Congress, abolishing involuntary servitude for seamen as a penalty for desertion, providing for the better treatment of seamen at sea and prohibiting the assignment by seamen of their wages in advance, excepting such assignment as shall be in favor of dependent relatives. Before the outbreak of the war we initiated a movement for the establishment of patrol ships under international supervision in recognized zones of trans-atlantic travel to give "first aid" to ships in distress on the high seas.



GAME ROOM

Given by Thomas Potts in memory of his mother, Isabella Potts

Maximum monthly attendance, 11,251. Open from 1 to 11 P. M. Contains eight billiard and pool tables, one bagatelle table, one shuffle board and nineteen small game tables.

## Obituary

During the past year the Society has suffered the loss of two of the lay-vice-presidents, Mr. J. Augustus Johnson and Admiral Alfred T. Mahan. The former had been a member of the Society since 1892, the latter since 1867. Both were among its most active and useful members, and their unselfish and unflinching service in the interests of seamen will be gratefully remembered by all who had the privilege of working with them.

\* \* \*

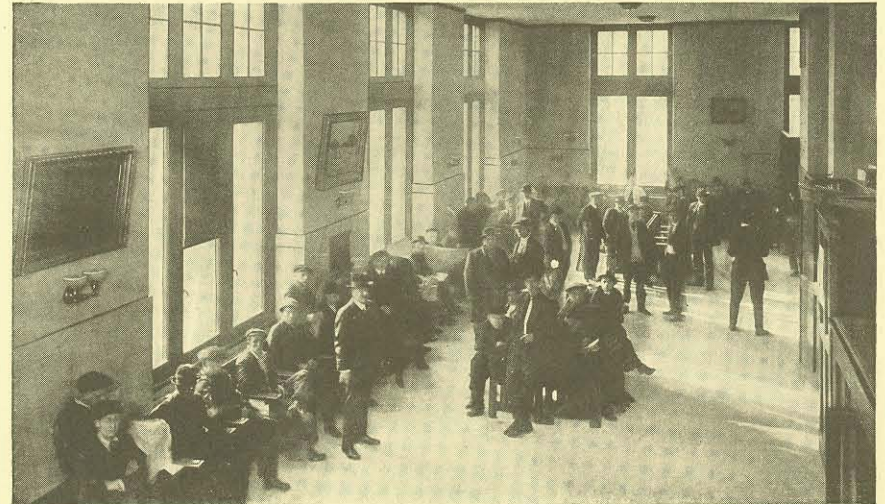
Considerable legacies from the estates of Ferris S. Thompson, Abby S. Thompson and Oscar Egerton Schmidt have been paid into the Society's treasury during the year.

\* \* \*

It is interesting to note that a new accounting system has been successfully put in operation, and that the accounts of the Society have been duly audited by an outside firm of expert accountants.

\* \* \*

A change in the by-laws became effective early in the year, by which the office of honorary president was created and the duties of the former chairman of the Executive Committee were transferred to the office of president.



HOTEL LOBBY AND SITTING ROOM

Given by Lisenard Stewart in memory of his mother,  
Mary Rhinelander Stewart

Reserved for those lodging in the building and from which they have access to the sleeping accommodations for 518 guests. An average of 446 men were lodged nightly; 163,064 lodgers in one year.



## STATISTICS FOR THE MONTH OF DECEMBER, 1913

BEING AN ODD MONTH DUE TO CHANGE OF TIME OF THE ANNUAL MEETING  
Submitted by the REV. ARCHIBALD R. MANSFIELD, Superintendent

### RELIGIOUS DEPARTMENT

|   |       |
|---|-------|
| Number of Services—                               |       |
| English . . . . .                                 | 22    |
| Scandinavian (Swedish and Danish) . . . . .       | 16    |
| Spanish . . . . .                                 | 4     |
| Total . . . . .                                   | 42    |
| Aggregate attendance . . . . .                    | 1,966 |
| Communion Services (public and private) . . . . . | 3     |

### SHIPPING DEPARTMENT

|  |     |
|--|-----|
| Number of vessels to which crews or parts of crews have been furnished . . . . . | 35  |
| Men signed and shipped . . . . .   | 256 |
| Men provided with employment, temporary, ship and other . . . . .                | 53  |
| Total number of men provided with employment . . . . .                           | 309 |

### HOTEL, POST OFFICE AND BAGGAGE DEPARTMENTS

|  |        |
|--|--------|
| Number of lodgers occupying the building . . . . .     | 12,540 |
| Lodgers employed through Shipping Department . . . . . | 189    |
| Letters received for seamen . . . . .                  | 2,340  |
| Pieces of dunnage checked . . . . .                    | 1,262  |

### RELIEF DEPARTMENT

|   |  |
|---|--|
| Aided from Morrill, Morgan and Bourne Fund, and other funds . . . . . | 367                                      |
| Visits to vessels . . . . . 168                                       | } Total visits by entire staff . . . . . |
| Visits to hospitals . . . . . 9                                       |  |
| Visits to patients . . . . . 39                                       |  |
|   | 216                                      |

### SOCIAL DEPARTMENT

|  |       |
|--|-------|
| Entertainment . . . . .  | 1     |
| Attendance . . . . .   | 497   |
| Packages reading matter distributed from stations and the Institute Tender . . . . . | 1,008 |

### BOAT AND HARBOR SERVICE, TENDER "SENTINEL"

|                               |     |
|-------------------------------|-----|
| Trips made . . . . .          | 27  |
| Men transported . . . . .     | 221 |
| Dunnage transported . . . . . | 393 |
| Vessels visited . . . . .     | 107 |

### SAVINGS DEPARTMENT

|  |             |
|--|-------------|
| Number of deposits . . . . .                               | 324         |
| Amount of deposits . . . . .                               | \$17,113.31 |
| Number of transmissions . . . . .                          | 113         |
| Amount of transmissions . . . . .                          | \$6,314.69  |
| Number of home countries of depositors . . . . .           | 31          |
| Number of countries to which money has been sent . . . . . | 12          |

## GENERAL SUMMARY OF WORK

ALL STATIONS AND DEPARTMENTS, JANUARY 1, 1914, TO DECEMBER 31, 1914  
Submitted by the REV. ARCHIBALD R. MANSFIELD, Superintendent

### RELIGIOUS DEPARTMENT

|   |     |
|---|-----|
| Number of Services—                         |     |
| English . . . . .                           | 191 |
| Scandinavian (Swedish and Danish) . . . . . | 143 |
| Spanish . . . . .                           | 145 |
| German . . . . .                            | 36  |
| Lettish . . . . .                           | 12  |
| Total . . . . .                             | 527 |

|  |        |
|--|--------|
| Aggregate attendance . . . . .                               | 22,756 |
| Baptisms . . . . .   | 3      |
| Marriages . . . . .  | 1      |
| Funerals . . . . .   | 8      |
| Communion Services (public and private) . . . . .            | 22     |
| Confirmation Services, two . . . . . candidates              | 17     |
| Bibles, Prayer Books, Gospels and Testaments given . . . . . | 3,554  |
| St. Andrew's Brotherhood Bible Class Meetings . . . . .      | 22     |
| Attendance at Bible Class Meetings . . . . .                 | 595    |

### SHIPPING DEPARTMENT.

|  |       |
|--|-------|
| Number of vessels to which crews or parts of crews have been furnished . . . . . | 496   |
| Men signed and shipped . . . . .   | 3,341 |
| Men provided with employment, temporary, ship and other . . . . .                | 1,036 |
| Total number of men provided with employment . . . . .                           | 4,377 |

### HOTEL, POST OFFICE AND BAGGAGE DEPARTMENTS

|  |         |
|--|---------|
| Number of lodgers occupying the building . . . . .     | 163,064 |
| Lodgers employed through Shipping Department . . . . . | 2,592   |
| Letters received for seamen . . . . .                  | 24,942  |
| Pieces of dunnage checked . . . . .                    | 20,258  |

### RELIEF DEPARTMENT

|   |  |
|---|--|
| Aided from Morrill, Morgan and Bourne Fund, and other funds . . . . . | 4,326                                    |
| Sent to Legal Aid Society . . . . .                                   | 25                                       |
| Sent to hospitals and dispensaries . . . . .                          | 267                                      |
| Visits to vessels . . . . . 4,636                                     | } Total visits by entire staff . . . . . |
| Visits to hospitals . . . . . 378                                     |  |
| Visits to patients . . . . . 5,516                                    |  |
|   | 10,530                                   |

### SOCIAL DEPARTMENT

|  |        |
|--|--------|
| Entertainments and lectures . . . . .  | 126    |
| Attendance . . . . .   | 22,140 |
| Packages reading matter distributed from stations and the Institute Tender . . . . . | 5,637  |
| Comfort bags, knitted articles, etc., given to seamen . . . . .                      | 1,313  |

### BOAT AND HARBOR SERVICE, TENDER "SENTINEL"

|                               |       |
|-------------------------------|-------|
| Trips made . . . . .          | 416   |
| Men transported . . . . .     | 2,166 |
| Dunnage transported . . . . . | 4,182 |
| Vessels visited . . . . .     | 1,440 |

### SAVINGS DEPARTMENT

|  |              |
|--|--------------|
| Number of deposits . . . . .                               | 4,203        |
| Amount of deposits . . . . .                               | \$210,524.24 |
| Number of transmissions . . . . .                          | 1,035        |
| Amount of transmissions . . . . .                          | \$66,196.49  |
| Number of home countries of depositors . . . . .           | 73           |
| Number of countries to which money has been sent . . . . . | 43           |

EXTRACTS AND ABBREVIATED STATEMENTS FROM THE REPORT  
PRESENTED BY THE

SUPERINTENDENT

TO THE BOARD OF MANAGERS  
AT ITS ANNUAL MEETING

In his report the Superintendent desires to present briefly the work of each department and sub-department of the Institute, that the members of the Board may have a more complete and comprehensive knowledge of the Society's responsibilities and obligations.

There are fourteen departments, with heads in charge of each. They are: Administration; Religious; Social; Hotel (sub-divided into Barber Shop, Watchman, Elevator, Laundry and House); Restaurant (composed of Officers' Dining Room, Lunch Counter and Soda Fountain); Savings; Shipping; Dun- nage; Slop Chest; Boat; Ways and Means; Educational; Relief; Engine; and the North River Station, with similar but fewer departments.

The *general policy* of the administration is to act upon the results of regular conferences with the heads of these departments, held daily, weekly or on special call.

Our *ideals* and *standards* are kept ever before them, and they and their assistants are made to realize that they must conform to them in so far as possible.

There are regularly employed by the Society 118 men and women; 110 at the Institute headquarters, 25 South Street; 4 at the North River Station, 341 West Street; and 4 on board the tender "J. Hooker Hamersley."

The *weekly wage system* for the entire staff has been installed and works most satisfactorily.

"*One day off in seven*" is the rule for each employee with few unavoidable exceptions.

It is interesting to note that one of the greatest difficulties in the work is the point of contact between the employee and the seaman, which is perhaps best illustrated at the *Hotel Desk*, where, during the year, 163,064 *lodgers registered*. The latter gets the impression that the necessary rules and regu- lations were primarily devised for the purpose of giving to the Institute official,



GENERAL READING AND WRITING ROOM

Presented by Gerard Beekman in memory of his brother,  
James William Beekman

Noon-day Talks of an inspirational character are given here twice a week, provided by Mr. Beekman's generosity.

an opportunity of "bull-dozing" him. Patient and courteous explanations, however, force him to realize that the few rules which exist are for his pro- tection and good.

Our Hotel Manager, after an experience of seven years in welfare work among the men of the United States Navy, states that in comparison, man for man, the general behavior of the seamen who frequent the Institute is superior. The better grades of seafaring men appreciate the efforts of the Institute to maintain high standards and the firmness observed towards the undesirables and their methods; this has had a very beneficial effect and greatly improved the general conditions.

The care that is exercised by the hotel clerks, watchmen and other mem- bers of the staff to ascertain if the intoxicated seaman has moneys or valu- ables in his possession, and diplomatically persuading him to leave them in the safe custody of the Institute, brings its own reward in the gratitude of the man when he finds later that there is salvage for him.

The *Inquiry and Information Department* acts as a check on the memory of the hotel clerks with regard to the character and financial standing of every guest.



NEW YORK NAUTICAL COLLEGE

Under the joint management of the West Side Y. M. C. A. and this Society. One hundred and thirty-three men have successfully passed examinations and secured their licenses.

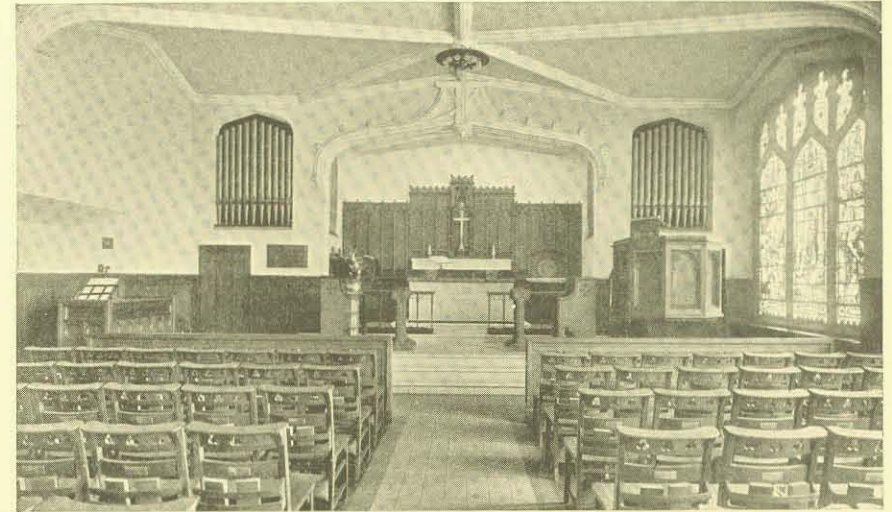
The *Uniforms* which are now worn in the House, Watchman and Restaurant Departments and by the crew of the tender "J. Hooker Hamersley," give tone to the Institute and produce practical results.

The *Post Office Department*, in which the men have great confidence, has handled 24,942 pieces of mail with great facility.

The *House Department* has a staff of nineteen men and eight women, and is responsible for the cleaning of the whole building, with the exception of the roof and engine department. Every part of the building is systematically and thoroughly cleansed, e. g., in the bedrooms and dormitories all mattresses are frequently cleaned with a vacuum cleaner; bed frames washed with disinfectant; blankets and counterpanes sterilized and washed; all paint from ceiling to floor washed, all wood work washed and polished; and the halls are scrubbed semi-weekly with disinfectant. There have been twenty-three cases of *infectious diseases*; the large sterilizer has played a very important part in this work of cleanliness.

There have been twelve fires in bedrooms caused in all cases through the carelessness of men smoking while lying in bed.

Through the *House Laundry* a maximum of 1,810 pieces and an average



CHAPEL OF OUR SAVIOUR

Built by contributions from Parishes in the three Dioceses of New York, Long Island and Newark, and furnished by subscriptions from many individuals and church organizations. Frequent services are held in six different languages. Annual aggregate attendance, 22,756.

of 1,400 pieces daily are washed and ironed at a cost of \$6.50 for supplies and labor.

It is most gratifying to state that there has been practically no wanton destruction of anything in the building, as plumbing, furniture, paint work, linen, etc.

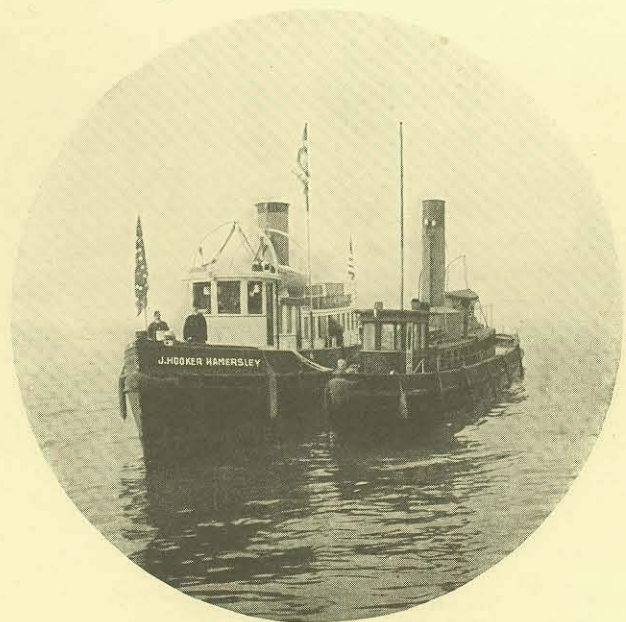
The *Restaurant Department* is composed of the Dining Room, Lunch Counter and Soda Fountain, and although it has not been in operation a full year has made an unexpected and a most satisfactory showing. There have been issued 277,676 tickets for purchases of all kinds, averaging 864 plus per day, at an average of eleven cents plus per ticket. "Table d'Hote" meals, comprising choice of soup, roast meats, vegetables and dessert, can be obtained for twenty-five cents. Combination meals are also served at prices from five cents up. Quality, quantity and low prices have made this department popular and successful.

The *Watchman Department* is one of the most difficult to administer. Numbers of undesirables, panhandlers, beachcombers, crimps and such like have been discovered in the building and have been ejected. Arrests have been made and convictions secured, and with the assistance of the Police Depart-

ment, efficient protection in and out of the building has been provided. Such protection has been especially effective at night in the dormitories. This watchfulness and protection has been frequently and favorably commented upon by the guests of the hotel.

Seamen are looking more and more to our *Shipping Department* as the principal shipping center in the port, and this fact seems to be more and more recognized by the shipping community. We have added to our responsibilities the shipping for two additional companies and more miscellaneous shipping, especially for yachts.

The *Boat and Harbor Service* becomes more and more invaluable to the entire Institute; without the tender "J. Hooker Hamersley" it would be impossible to accomplish such effective work in the Shipping Department, to which she devotes 50 per cent of her time; e. g., when a vessel upon which we are putting the crew is sailing, we must quickly provide substitutes for deserters, which are secured and frequently put on board after the vessel has gotten under way, fitted out from the boat slop chest and signed on without delaying the ship, which in many instances has been obliged to leave her



A CONTRAST

The old boat "Sentinel" and the new tender "J. Hooker Hamersley"



SLOP CHEST—Given by Miss Katharine Du Bois  
A rival of petty graft and wholesale robbery

dock on slack water within thirty minutes' time. This saves five or six hours' time. The Boat is indispensable not only to the Shipping Department, but to the Religious, Social, Slop Chest and Relief Departments.

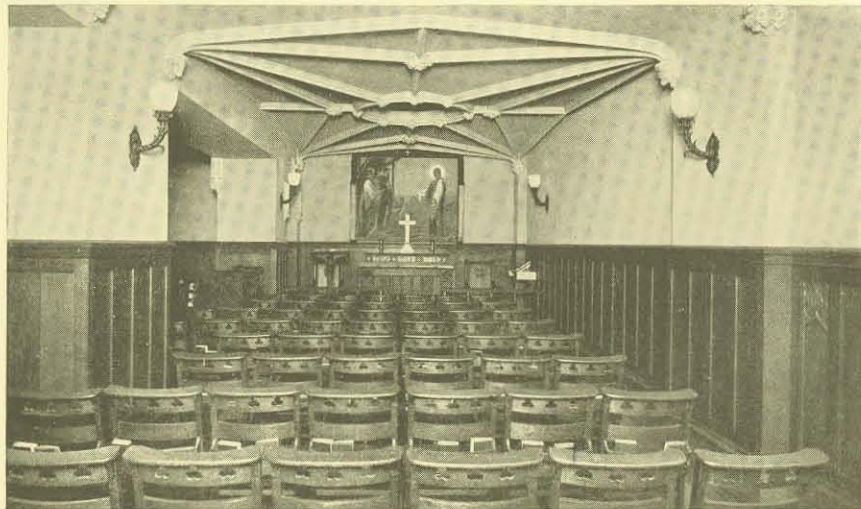
The *Slop Chest Department*, a rival of petty graft and wholesale robbery, plays a very important part in the work of the Institute, both in the building and on the boat. It has had 3,047 cash customers, handled 904 allotment notes and has been self-supporting. It is gratifying to note that the seamen are coming more and more to recognize the value rendered by this department.

The *Baggage Department*, which handled 20,258 pieces of dunnage, is most satisfactorily organized and has an excellent and almost perfect system. The personal attention and courtesy shown by the employees and the strictness and absolute firmness of administration has made this department more popular and greatly increased confidence.

*Savings Department.* It is a striking fact that the total amount of deposits this year has exceeded former years by nearly \$100,000. The personnel of the depositors has changed considerably: heretofore the men from the deep water ships paid off in the shipping office of the British Consulate General were the majority of those who made use of this department, but now in the new building we have an increasing number of depositors of all kinds of seamen and boatmen who make the Institute their home.

Concerning the *Religious and Spiritual Work* and its influence no adequate or satisfactory statement can be made; the statistics are significant and speak for themselves. Never before in the history of the Society has such varied and comprehensive work been undertaken. Our religious appeal has been made to different nationalities in six languages, at many services; through Bible Classes conducted by representatives of St. Andrew's Brotherhood; by means of Noon Day Talks given in the General Reading Room, and provided by the Religious Department of the West Side Branch of the Y. M. C. A., and through the generosity of Mr. Gerard Beekman; and further by means of temperance work and other similar efforts—always bearing in mind that the ultimate aim and object of *all* our work is its influence on the souls of men.

The *Social Department* under the supervision of the Assistant Superintendent has been very active and successful. It is not possible to abbreviate satisfactorily the Superintendent's statements concerning the privileges and opportunities of its comprehensive and exceedingly important work of useful influences, which has produced visible results. Mention was made of the lantern and motion picture lectures, both educational and entertaining, provided by the Board of Education, and by other organizations and individuals, of concerts and entertainments of all sorts; of the excellent and faithful work done under the auspices of the Seamen's Benefit Society among



SMALL CHAPEL

Almost entirely furnished by Mrs. Lucie B. Carew



These Apprentice lads were from the British vessels, S.S. "Willerby," the S.S. "Mary Ada Short" and the barque "Invercoe," which were captured and sunk by the German vessel, S.S. "Prince Eitel Friedrich."

the Officers and Apprentice lads, through theatre parties, picnics to the parks, etc., and of the continued loyal and generous assistance of the "Hope Club."

The *New York Nautical College*, under the joint management of the West Side Branch of the Young Men's Christian Association and the Seamen's Church Institute, we hope is the beginning of a comprehensive and efficient *Educational Department*. In eleven months thirty-six men have graduated; one man has obtained an important position in the Brooklyn Navy Yard; another a position as mate in an auxiliary schooner, about to make an extended voyage of adventure; another having passed the Civil Service examinations has obtained a position in the Light House Service; another has become a nautical expert in the Hydrographic Office at Washington; and others are now active as Masters or Mates.

Courses in Marine Engineering, First Aid, etc., and also in languages, will be inaugurated during the year.

Of the *Ways and Means Department* there is practically nothing for the Superintendent to report, inasmuch as such full and complete statements of the work have been presented by the energetic and untiring Chairman of the Committee. Notwithstanding the financial conditions prevailing during the

year, the department has been remarkably successful in securing income for current expenses.

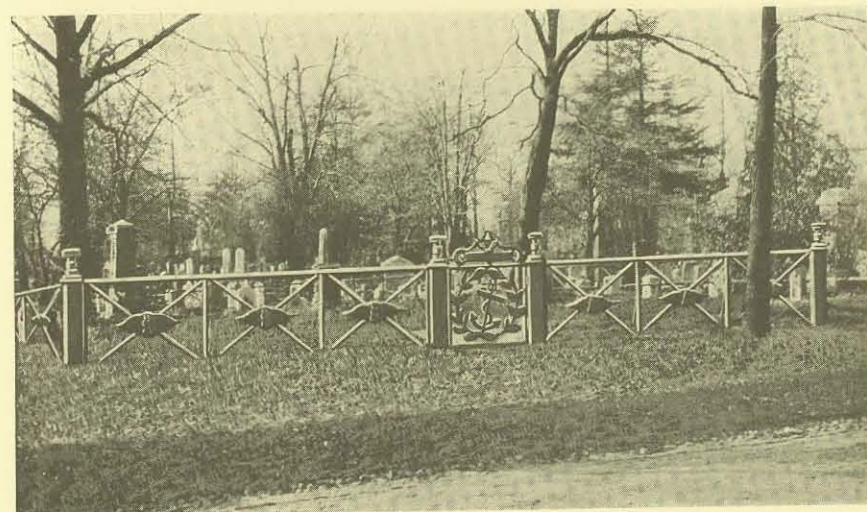
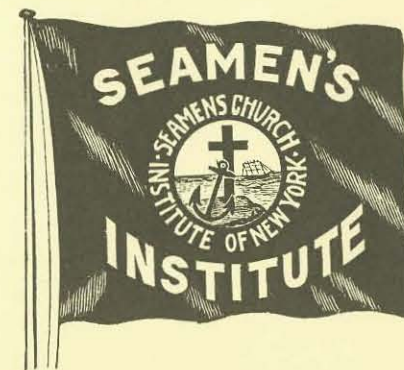
The difficulties and problems of the *Relief Department* were fully described with references to and illustrations of Hospital, Dispensary and House Clinic work; assisting the more or less helpless to secure admission to "Sailors Snug Harbor"; placing destitute children of Seamen and Boatmen in the "Home for the Relief of Destitute Children of Seamen;" every form of temporary relief administered by the Institute such as lodging, feeding, clothing, transporting, etc., having always uppermost in mind our desire to help men to help themselves and that "self-help results in self-respect." The change in our relief policy, by furnishing temporary work, has proven most satisfactory both to the Administration and to the men themselves. A rope mat making industry has been introduced. The art of making mats is not difficult. This method of extending relief appeals to the better class of men and assists us in weeding out those who do not care to work and thus reduces appreciably the number of applicants for relief. It tends towards preserving the men's self-respect. It makes every convalescent a self-supporting man from the very moment he is able to perform light labor.

A new *Accounting System* has been completely installed by Pace & Wythes and now controls the financial operations in all the departments of the Institute. It has been carefully organized and handles daily a large volume of detailed work. The Savings Department accounts are audited by the head of the department twice a week, and the accounts at the North River Station are audited regularly at less frequent intervals. Comprehensive financial statements are prepared each month showing the total income and expenditure in every department, and the deficit or surplus for the month and for the year to date. A balance sheet showing the operating assets, liabilities, and surplus, is also given each month. With references to this Department, Mr. Pace writes as follows: "I am sure that the results for the current year, which should have but little interference from constructive and initial organization matters, should show a much better net operating result than the year just closed. There is no institutional work, so far as my observation goes, that can be compared with the Seamen's Church Institute."

The *Commercial Department* methods have made for economy in all the purchasing for the whole Society. The work of this department has been prosecuted intelligently, earnestly and efficiently.

The Superintendent in conclusion presented a complete analysis of the very important work accomplished by the *Engine Department* not only in the engine room but throughout the entire building in connection with the lock and key system, the plumbing and electrical work. The Engineer-in-

Chief must constantly watch the heating apparatus, water lines, basins, shower baths, electric lights, bell circuits, elevators, etc., and meet practically every kind of mechanical demand which he has done economically and with comparatively little outside expense.



THE INSTITUTE CEMETERY PLOT

Given to the Society by "The Evergreens" in 1851

The ornate iron fence was erected by contributions from the merchants of New York

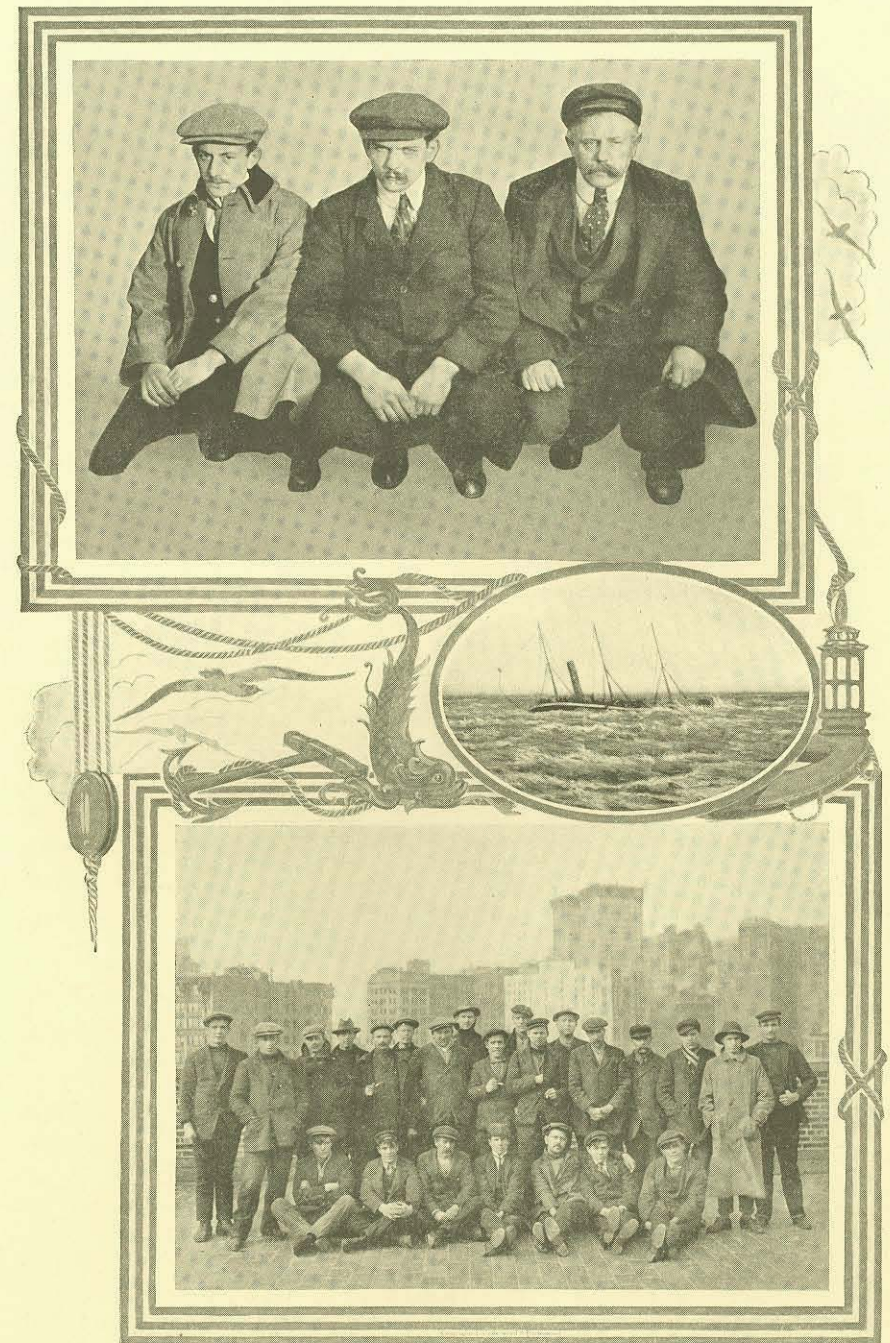
## REPORT OF THE BUILDING COMMITTEE

Although the Building Committee has completed its work of erecting and furnishing the new Institute at 25 South Street, it has been continued in existence and is still working actively to raise the balance needed to turn over the Institute to the Society fully paid for and wholly free from debt.

During the past year the Committee has sought in various ways to collect the necessary balance, but has not yet met with complete success owing to the great war as well as to certain other causes. While the Committee has collected over \$60,000 between September, 1913, and the present time, still during the past year a number of additional items of cost have been incurred in rearranging certain portions of the building and in supplying furniture which had not been originally contemplated, involving an additional expense of about \$20,000, besides it has been necessary for the Committee to pay interest on the outstanding indebtedness, and this has involved an annual expenditure of over \$10,000.

To-day the financial situation in brief is this: To pay all the indebtedness of the Institute will require about \$250,000. Of this amount \$100,000 has been pledged contingent upon the remaining \$150,000 being raised, so that the Building Committee must still raise this last named sum. As other philanthropic enterprises seem to be able to raise money notwithstanding the business depression, your Committee feels that it should not cease its efforts, and it confidently believes that with the support of the other members of the Board of Managers and with the assistance of the generous friends of our Society, this balance can be raised and the building turned over to the Society free of debt during the current year. To this end all members of the Board are urged to give their assistance, not by direct gifts of money, but by taking their friends to the Institute, showing them the work that is being done, and urging upon them the necessity of helping. Your Committee feels that a large number of subscriptions of \$50, \$100, or up to \$500, could be secured, and this will be the most certain way of extinguishing the present debt, rather than by counting on a few large subscriptions which are not likely to be obtained. If the earnest co-operation of each member of the Board of Managers can be obtained, as above indicated, the Committee feels sure of success.

EDMUND L. BAYLIES,  
Chairman.



CREW OF THE S.S. "CHESTER"—(On the roof of the Institute)

Twenty-seven officers and men saved from certain death in the icy waters of the North Atlantic with great hazard by the heroism of some of the crew of the American Line S.S. "Philadelphia."

**TREASURER'S STATEMENT FROM  
JANUARY 1st TO DECEMBER 31st, 1914  
ANNUAL OPERATING STATEMENT**

RECEIPTS

|   |             |              |
|---|-------------|--------------|
| Subscriptions and Donations . . . . .   |             | \$36,372.03  |
| Church Offerings . . . . .  |             | 3,363.57     |
| Donations for Expenses of Boat and Receipts of Shipping Department . . . . .                            |             | 5,350.25     |
| Collections on Ships . . . . .  |             | 665.10       |
| Income from Invested Funds . . . . .  |             | 5,291.29     |
| Atlantic Mutual Insurance Company, Dividend . . . . .   |             | 49.20        |
| Institute, 25 South Street:   |             |              |
| Rent, Light, etc., British Consul's Shipping Office . . . . .   |             | 1,572.00     |
| Restaurant—Receipts . . . . .   | \$31,071.15 |              |
| Expenses . . . . .  | 29,280.70   |              |
| Profit . . . . .  |             | 1,790.45     |
| Slop Chest—Receipts . . . . .   | \$7,634.04  |              |
| Expenses . . . . .  | 6,979.65    |              |
| Profit . . . . .  |             | 654.39       |
| Receipts at Hotel for Lodgings, Barber Shop, Baggage Room, Soda Fountain, for Social Work, etc. . . . . |             | 50,183.02    |
|   |             | \$105,291.30 |
| Operating Deficit for 1914 . . . . .  |             | 5,817.01     |
|   |             | \$111,108.31 |

NOTE—At the annual meeting in December, 1913, the fiscal year of the Institute was changed to correspond with the calendar year.

PAYMENTS

|  |  |              |
|--|--|--------------|
| North River Station:   |  |              |
| Salaries, Expenses, Repairs, etc. . . . .  |  | \$5,883.51   |
| Institute Boat "Sentinel" and Shipping Department:   |  |              |
| Salaries and Expenses . . . . .  |  | 8,498.80     |
| "Lookout," Printing and Postage . . . . .  |  | 2,361.13     |
| Institute Building, 25 South Street:   |  |              |
| Religious Work . . . . .   |  | 3,273.00     |
| Payments for Salaries of Superintendent, Assistant Superintendent, Chaplains, Wages of Employees of Hotel and all Departments, and Supplies for Hotel, Engine Room, etc. . . . . |  | 91,091.87    |
|  |  | \$111,108.31 |

FRANK T. WARBURTON,  
*Treasurer.*

**MORRILL, MORGAN AND BOURNE FUNDS**

| RECEIPTS                                | PAYMENTS   |
|---|--|
| Balance on hand, Jan. 1, 1914 . . . . . | Paid Supt. Mansfield for purposes of the Funds . . . . . |
| \$926.84                                | \$1,885.81   |
| Income from Invested Funds . . . . .    | Balance on hand, Dec. 31, 1914 . . . . .                 |
| \$1,112.37                              | 162.87   |
| Interest earned in bank . . . . .       |  |
| 9.47                                    |  |
| 1,121.84                                |  |
| \$2,048.68                              | \$2,048.68   |

**ROXY M. SMITH FUND**

|                                    |  |          |
|------------------------------------|--|----------|
| Balance, January 1, 1914 . . . . . |  | \$107.95 |
| Receipts . . . . .                 |  | 79.20    |
|                                    |  | \$187.15 |

**CEMETERY PLOT AND BURIAL FUND**

|  |  |          |
|--|--|----------|
| Balance on hand, January 1, 1914 . . . . . |  | \$20.00  |
| Receipts . . . . .                         |  | 107.25   |
|  |  | \$127.25 |
| Payments . . . . .                         |  | 91.45    |
|  |  | \$35.80  |

**LEGACY ACCOUNT**

RECEIPTS

|  |             |              |
|--|-------------|--------------|
| Estate of Oscar Egerton Schmidt, deceased . . . . .  |             | \$2,975.00   |
| Ferris S. Thompson Trust . . . . .   |             | 97,953.46    |
| Estate of Abby S. Thompson, deceased:  |             |              |
| Cash . . . . .   | \$44,954.90 |              |
| 90 Shares Erie Railroad Company First Preferred Stock, valued by Committee on Trust Funds at . . . . . | 2,880.00    |              |
| 90 Shares Great Northern Iron Ore Properties Stock, valued by Committee on Trust Funds at . . . . .    | 2,520.00    |              |
|  |             | 50,354.90    |
|  |             | \$151,283.36 |

PAYMENTS

|   |             |              |
|---|-------------|--------------|
| For Account of Building Committee, Note for \$103,000.00 held by United States Trust Company of New York, with Interest . . . . . |             | \$106,140.08 |
| Mortgage on Superintendent's Residence, No. 114 Davis Avenue, West New Brighton, Staten Island, N. Y. . . . .                     |             | 4,000.00     |
| Treasurer, for Current Expenses . . . . .   |             | 5,000.00     |
| Committee on Trust Funds:   |             |              |
| Cash . . . . .  | \$30,743.28 |              |
| 90 Shares Erie Railroad Company First Preferred Stock, valued at . . . . .  | 2,880.00    |              |
| 90 Shares Great Northern Iron Ore Properties Stock, valued at . . . . .   | 2,520.00    |              |
|   |             | 36,143.28    |
|   |             | \$151,283.36 |

FRANK T. WARBURTON,  
*Treasurer.*



## COMMITTEE ON TRUST FUNDS

### ASSETS

|   |             |
|---|-------------|
| Railroad Securities, etc. . . . .                       | \$71,288.62 |
| Bonds and Mortgages . . . . .                           | 99,000.00   |
| Real Estate, 52 Market Street . . . . .                 | 7,000.00    |
| Cash on deposit, New York Life Ins. & Trust Co. . . . . | 10,500.59   |

\$187,789.21

#### PERMANENT FUND: Income to be applied to the general

|  |              |
|--|--------------|
| uses of the Society . . . . .            | \$105,371.32 |
| Mary LeRoy King, "Launch Fund" . . . . . | 3,324.87     |

\$108,696.19

#### WILLIAM WALDORF ASTOR FUND: Income to be applied first to the support of Missionary at East River Station, afterwards to the maintenance of any missionaries employed by the Society . . . . .

50,526.50

### FUNDS FOR SPECIAL PURPOSES

#### DAVENPORT FUND: Income to be applied to the purchase of books for distribution among seamen . . . . .

2,000.00

#### MORRILL FOUNDATION: In Memoriam of the late Captain Charles Montgomery Morrill. Income to be applied exclusively to the relief of destitute mariners and those dependent upon them who may have been left destitute by their death while following the sea . . . . .

17,831.25

#### HOSIER MORGAN FUND: Income to be used in common with that of the Morrill Foundation Fund . . . . .

1,735.27

#### EMILY H. BOURNE FUND: Income to be used in common with that of the Morrill Foundation Fund . . . . .

5,000.00

#### ROXY M. SMITH FUND: In memory of her husband, W. V. R. Smith. Income to be applied to giving annually an entertainment for seamen on the birthday of W. V. R. Smith, August 2nd . . . . .

2,000.00

\$187,789.21

### INCOME

|  |            |
|--|------------|
| Received from mortgages . . . . .  | \$4,787.75 |
| Received from railroad securities . . . . .                                  | 1,952.50   |
| Received from New York Life Ins. & Trust Co. . . . .                         | \$238.95   |
| Received from New York Life Ins. & Trust Co., Balance last account . . . . . | 191.58     |

430.53

\$7,170.78

#### Distributed as follows:

|  |            |
|--|------------|
| Permanent Fund, paid Treasurer . . . . . | \$2,797.35 |
| Astor Fund, paid Treasurer . . . . .     | 2,036.62   |
| Davenport Fund, paid Treasurer . . . . . | 89.22      |

\$4,923.19

|  |         |
|--|---------|
| Smith Fund, paid Treasurer . . . . .                 | 79.20   |
| Morrill Foundation, paid Treasurer . . . . .         | 787.37  |
| Hosier Morgan Fund, paid Treasurer . . . . .         | 77.40   |
| Bourne Fund, paid Treasurer . . . . .                | 247.60  |
| Astor Fund, transferred to Sinking Fund . . . . .    | \$58.50 |
| Astor Fund, recording mortgage assignments . . . . . | 1.16    |

59.66

|  |          |
|--|----------|
| Permanent Fund, accrued interest on \$24,000 bonds purchased . . . . . | \$103.50 |
| Permanent Fund, recording mortgage assignments . . . . .               | 1.55     |

105.05

|  |        |
|--|--------|
| Morrill Foundation, recording mortgage assignments . . . . . | .39    |
| New York Life Ins. & Trust Co., commission . . . . .         | 67.43  |
| Balance with New York Life Ins. & Trust Co. . . . .          | 823.49 |

\$7,170.78

Dated, New York, January 20, 1915.

JOHN A. MCKIM,  
ORME WILSON, JR.,  
RO. L. HARRISON,  
JOHN SEELY WARD,  
Committee on Trust Funds.

## ANNUAL REPORT OF THE SEAMEN'S BENEFIT SOCIETY

### President's Report for 1914

During this year, in which the European war has wrought so many disastrous changes, the work of the Seamen's Benefit Society has continued without serious interruption.

Many activities which had been planned for the fall and winter had to be curtailed, but the Society's particular branch—the Apprentice Boys' Department—has not been allowed to suffer.

Tea on Sunday evenings has been provided for the Apprentices of the British Merchant Marine, who come to evening service.

Musical and dramatic entertainments on Thursday evening and for special festivals at Christmas, New Year's, Hallowe'en and Thanksgiving have been furnished.

Ice cream, fruit, cakes and cocoa have been provided for Thursday evenings.

Picnic refreshments for Saturday afternoons during the spring, summer and early autumn were provided; the Society purchased a tennis set for the use of the Apprentices.

It has provided fruit, flowers and ice cream for sick seamen in hospitals; it has sent comfort bags, mufflers, Uhlan caps, sailors' helmets and other knitted articles.

On March 30 there was a meeting of the Lenten Sewing Class in the Apprentice Room of the Institute: it was a stormy day, but about fifteen members attended.

A theatre party was arranged to include about twenty Apprentice boys, and it is hoped to have these occur frequently under the supervision of an Institute worker.

Flowers for the Chapel were furnished on every Sunday during the summer, in co-operation with the Fruit and Flower Guild.

Books and magazines for the Institute were collected.

The Society would like to add to its Associate Membership all women who are in sympathy with its aims.

The dues are \$5.00 a year.

Miss CATHARINE S. LEVERICH,  
President.

## SEAMEN'S BENEFIT SOCIETY

IN ACCOUNT WITH H. VAN C. LUNG, TREASURER

NOVEMBER 30, 1913, TO DECEMBER 2, 1914

### To Cash Received:

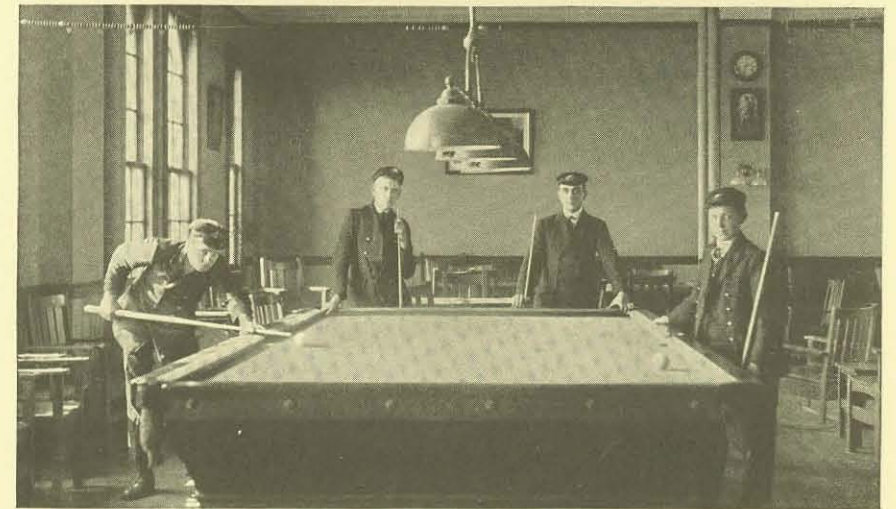
|   |            |
|---|------------|
| By Balance, as per last report . . . . .  | \$703.22   |
| Membership dues . . . . .                 | 287.00     |
| Proceeds of Lenten Sewing Class . . . . . | 228.00     |
| Donation . . . . .                        | 2.50       |
| Interest . . . . .                        | 15.68      |
|   | <hr/>      |
|   | \$1,236.40 |

### To Cash Paid:

|  |            |
|--|------------|
| Rev. A. R. Mansfield for Social Work . . . . . | \$532.65   |
| Hanover Press, printing circulars . . . . .    | 16.50      |
| Balance, December 2, 1914 . . . . .            | 687.25     |
|  | <hr/>      |
|  | \$1,236.40 |

Audited and found correct, December 9, 1914.

JOHN W. MOORE, Paymaster, U. S. Navy,  
Newport, R. I.



APPRENTICES' ROOM

Given by the Seamen's Benefit Society

## SEAMEN'S BENEFIT SOCIETY

### Officers

MISS CATHARINE S. LEVERICH, President    MRS. GEORGE A. LUNG, Treasurer  
MISS AUGUSTA M. DE PEYSTER, Secretary

### Active Members

|                            |                               |
|----------------------------|-------------------------------|
| MISS JOSEPHINE L. BEEKMAN  | MISS MARGARET D. LEVERICH     |
| MRS. ARTHUR COPPELL        | MRS. HOWARD T. MARTIN         |
| MRS. F. ASHTON DE PEYSTER  | MRS. ROBERT B. MINIS          |
| MISS FRANCES G. DE PEYSTER | MRS. PENNINGTON SATTERTHWAITE |
| MISS ISABEL M. GREGORY     | MRS. JOSEPH FERRIS SIMMONS    |
| MRS. RYDER HENRY           | MISS MARGARET STIMSON         |
| MRS. SAMUEL N. HINCKLEY    | MRS. CHARLES FEARING SWAN     |
| MISS EDITH VAN C. JAY      | MISS EMILY B. VAN AMRINGE     |

### Associate Members

|                               |                              |
|-------------------------------|------------------------------|
| MRS. EDWARD N. BREITUNG       | MRS. EDWARD D. LEVERICH      |
| MRS. EDMUND L. BAYLIES        | MRS. LEA MCI. LUQUER         |
| MISS LOUISA H. BARNARD        | MRS. J. I. MOUNT             |
| MISS CORNELIA A. BEEKMAN,     | MRS. ALFRED T. MAHAN         |
| MRS. J. J. BLODGETT           | MRS. J. H. MORRISON          |
| MR. ALEXANDER JAY BRUEN       | MRS. HENRY LEWIS MORRIS      |
| MRS. ANDREW CARNEGIE          | MRS. NEWBOLD MORRIS          |
| MISS ANNIE CLARKSON           | MRS. MEANY                   |
| MRS. H. V. CONRAD             | MISS CATHERINE NORWOOD       |
| MRS. JAMES MAY DUANE          | MRS. ALDRED DUANE PELL       |
| MISS KATHARINE DU BOIS        | MRS. ALBERT E. PUTNAM        |
| MRS. JOHN R. DELAFIELD        | MRS. JOHN H. PRALL           |
| MRS. HAMILTON FISH            | MRS. WILLIAM M. PURDY        |
| MRS. WILLIAM H. FEARING       | MRS. WILLIAM LOWE RICE       |
| MRS. ELBERT H. GARY           | MRS. FRANKLIN D. ROOSEVELT   |
| MRS. WILLIAM PIERSON HAMILTON | MRS. JAMES ROOSEVELT         |
| MRS. ANSON W. HARD, JR.       | MRS. W. EMLER ROOSEVELT      |
| MRS. ROBERT HOE               | MISS GRACE SCOVILLE          |
| MISS SARAH L. HORN            | MRS. HERBERT L. SATTERLEE    |
| MRS. E. DE P. HOSMER          | MRS. EDWIN B. SHELDON        |
| MRS. FRANK LONDON HUMPHREYS   | MRS. EDWARD B. SEXTON        |
| MISS MARGARET A. JACKSON      | MRS. JOHN JEWELL SMITH       |
| MRS. J. AUGUSTUS JOHNSON      | MRS. SPARROW                 |
| MISS LUCY H. KEAN             | MISS ELIZABETH M. VAN WINKLE |
| MRS. RUTHERFORD KEARNY        | MRS. PATRICK A. VALENTINE    |
| MISS C. KIRBY                 | MRS. WILLIAM E. VERMILYE     |
| MISS EDITH KING               | MRS. LAWRENCE WELLS          |
| MRS. JOSEPH T. LOW            | MISS CAROLINE WHITE          |
| MRS. SETH LOW                 | MISS MAY W. WHITE            |
| MR. SETH LOW                  | MRS. F. DE R. WISSMANN       |
| MRS. WILLIAM G. LOW           | MISS ETHEL ZABRISKIE         |
| MRS. WOODBURY G. LANGDON      |                              |

### Honorary Members

SIR COURTNEY W. BENNETT, H.B.M. Consul General, Great Britain  
A VAN DE SANDE BAKHUYZEN, Consul General, The Netherlands  
G. FARA FORNI, Consul General, Italy  
C. RAVN, Consul General, Norway  
RT. REV. DAVID H. GREER, D.D., LL.D.  
RT. REV. CHAS. H. BURCH, D.D.

## PLEA FOR THE SAILOR

1. The sailor has a *very short life*. On an average his sea life is only twelve years, while the landsman's is twenty-two or more. He has, therefore, a double claim to be *first* attended to.

2. On an average over the year *six sailors are drowned* every night. These are all cases of *hurried* deaths.

3. The sailor's life is one of *continual hazard*. He is liable at any moment to be called to enter in a life-and-death struggle with the remorseless waves. While others enjoy their peaceful slumbers on the pillow, he has often sleep banished from his eyes, and is up battling for dear life with the fierce spirit of the storm.

4. *The moment he touches shore* his troubles increase rather than diminish. He is waylaid by landsharks, who dare pitilessly to rob him, not only of his purse, but what is more precious—his character, his peace of conscience, and even of his very soul.

5. *The sailor has a soul to be saved* as precious as that of any of us. Were 1,000 ships full of costly cargoes to go to the bottom in a storm, the loss would be a trifle compared with that of the sailor's soul.

6. *He suffers greater privation* than other men. He leads the life of a stranger, and scarcely ever enjoys the pleasures of home. For one or two nights he is at home, so-called, he is a month at sea. To him the Sabbath Day brings no Sabbath privileges, for the most part. The atmosphere in which he moves is usually one hostile to religion.

7. *If he has his faults*, so much greater is the need of our Society to reform him. "The whole need not the Physician."

8. *He who came to seek and save the lost* is as able and willing to save the sailor as any other man, and when on earth He chose seven of His Apostles from this class.—(From *British and Foreign Sailors' Society Almanac*.)

## Form of Bequest

I give and bequeath to the "SEAMEN'S CHURCH INSTITUTE  
OF NEW YORK," a corporation incorporated under the laws of the  
State of New York, the sum of.....  
Dollars, to be used by it for its corporate purposes.

Donations should be sent to

FRANK T. WARBURTON, Treasurer,

68 William Street,

New York, N. Y.

