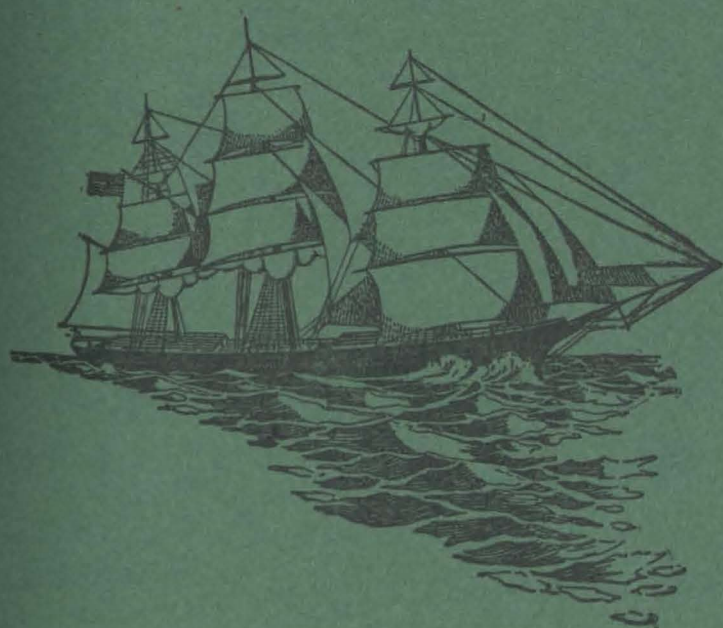


SEAMEN'S  
CHURCH INSTITUTE  
OF NEW YORK



SEVENTY-FOURTH  
ANNUAL REPORT  
1918

# ANNUAL REPORT

For the Year Ending 1918

PRESENTED AT THE

ADJOURNED ANNUAL MEETING OF THE SOCIETY

Wednesday, January 22, 1919

---

## STATIONS OF THE SOCIETY

---

SOUTH STREET INSTITUTE  
CHAPEL OF OUR SAVIOUR

SOCIETY'S ADMINISTRATION OFFICES  
25 SOUTH STREET, NEW YORK CITY  
Telephone, Broad 297.

---

NORTH RIVER STATION  
WEST STREET INSTITUTE

CHURCH OF THE HOLY COMFORTER  
341 WEST STREET (near Houston)  
Telephone, Spring 1623.

---

INSTITUTE TENDER, "J. HOOKER HAMERSLEY"

---

SUPERINTENDENT

REVEREND ARCHIBALD R. MANSFIELD, D.D.



### THE "INSTITUTE"

25 South Street (corner Coenties Slip)

In view of every vessel entering the Harbor. Thirteen stories above the street and three below, of concrete, steel and brick. Ground, building and equipment cost \$1,225,000. Titanic Memorial Lighthouse Tower and Time Ball, erected by popular subscription. Flag Pole and Flags presented by Lafayette Post No. 140, G. A. R. Top floor, Navigation and Marine Engineering School, Clinic, Meredyth Whitehouse Memorial, gift of Mr. and Mrs. Francis M. Whitehouse.

## OFFICERS AND MANAGERS OF THE SOCIETY

Chosen at the *Annual Meeting*, January 22nd, 1919

### Honorary President

Rt. Rev. DAVID H. GREER, D.D., LL.D.

### President

EDMUND L. BAYLIES, 1885

### Clerical Vice-Presidents

RT. REV. FREDERICK BURGESS, D.D.	REV. S. DE L. TOWNSEND, D.D.
RT. REV. EDWIN S. LINES, D.D.	REV. ERNEST M. STIRES, D.D.
VERY REV. HOWARD CHANDLER ROBBINS, D.D.	REV. WILLIAM TUFTS CROCKER,
REV. WILLIAM T. MANNING, D.D.	REV. C. F. J. WRIGLEY, D.D.
REV. HENRY LUBECK, LL.D., D.C.L.	REV. CHARLES L. SLATTERY, D.D.
	REV. FRANK WARFIELD CROWDER, Ph.D.

### Lay Vice-Presidents

WILLIAM H. BUTTERWORTH, 1873	LISPENARD STEWART, 1883
JOHN H. MORRISON, 1877	JOHN SEELY WARD, 1902
ALLISON V. ARMOUR, 1917	

### Secretary and Treasurer

FRANK T. WARBURTON, 46 Cedar Street, 1888

### Lay Managers

B. T. VAN NOSTRAND, 1887	ORME WILSON, JR., 1910
JOHN A. MCKIM, 1889	FRANKLIN REMINGTON, 1911
ROBERT L. HARRISON, 1901	J. FREDERIC TAMS, 1911
AUGUSTUS N. HAND, 1902	BAYARD C. HOPPIN, 1911
HERBERT L. SATTERLEE, 1902	OLIVER ISELIN, 1912
EDWIN A. S. BROWN, 1904	VINCENT ASTOR, 1912
CHARLES A. CLARK, 1905	SIR T. ASHLEY SPARKS, 1912
CLINTON E. BRAINE, 1905	MARINUS W. DOMINICK, 1912
BENJAMIN R. C. LOW, 1905	JOHN S. ROGERS, 1913
GEORGE E. CUMMINGS, 1905	LEROY KING, 1913
HENRY L. HOBART, 1907	LOUIS GORDON HAMERSLEY, 1913
EUGENE S. WILLARD, 1907	CHARLES E. DUNLAP, 1915
FRANKLIN D. ROOSEVELT, 1908	GEORGE W. BURLEIGH, 1915
AYMAR JOHNSON, 1908	EDWIN DE T. BECHTEL, 1915
ERNEST E. WHEELER, 1908	BERNON S. PRENTICE, 1915
ROBERT MCC. MARSH, 1908	JAMES BARBER, 1916
CHARLES W. BOWRING, 1909	JOHN J. RIKER, 1916

### Honorary Members

BARON ASTOR of Hever, 1871	CLAYTON PLATT, 1891
FRANCIS M. WHITEHOUSE, 1917	

### Superintendent

REV. ARCHIBALD R. MANSFIELD, D.D., 1896

## COMMITTEES OF THE BOARD OF MANAGERS

### North River Station

GEORGE W. BURLEIGH, Chairman, 27 Cedar Street  
HENRY L. HOBART BAYARD C. HOPPIN ROBERT MCC. MARSH

### South Street Institute and Sub-Committees

EDMUND L. BAYLIES, Chairman, 54 Wall Street  
ALLISON V. ARMOUR, Vice-Chairman

VINCENT ASTOR	AUGUSTUS N. HAND	JOHN S. ROGERS
JAMES BARBER	ROBERT L. HARRISON	SIR T. ASHLEY SPARKS
EDWIN DE T. BECHTEL	HENRY L. HOBART	J. FREDERIC TAMS
CHARLES W. BOWRING	OLIVER ISELIN	B. T. VAN NOSTRAND
GEORGE W. BURLEIGH	AYMAR JOHNSON	ERNEST E. WHEELER
EDWIN A. S. BROWN	LEROY KING	ORME WILSON, JR.
REV. WM. TUFTS CROCKER	BENJAMIN R. C. LOW	EUGENE S. WILLARD
MARINUS W. DOMINICK	JOHN A. MCKIM	REV. C. F. J. WRIGLEY, D.D.
CHARLES E. DUNLAP	FRANKLIN REMINGTON	

### Committee on the Hotel

EDMUND L. BAYLIES, Chairman, 54 Wall Street

ALLISON V. ARMOUR	AUGUSTUS N. HAND	ERNEST E. WHEELER
VINCENT ASTOR	FRANKLIN REMINGTON	ORME WILSON, JR.
CHARLES E. DUNLAP	B. T. VAN NOSTRAND	

### Committee on Social Work and Entertainment

BERNON S. PRENTICE, Chairman, 115 Broadway

CHARLES E. DUNLAP	AYMAR JOHNSON	EUGENE S. WILLARD
OLIVER ISELIN	BENJAMIN R. C. LOW	

### Committee on Religious Work

HENRY L. HOBART, Chairman, 120 Front Street

EDWIN A. S. BROWN	REV. WM. TUFTS CROCKER	REV. C. F. J. WRIGLEY, D.D.
	ROBERT L. HARRISON	

### Committee on Educational Work, Library, etc.

MARINUS W. DOMINICK, Chairman, Englewood, N. J.

ALLISON V. ARMOUR	LEROY KING	JOHN A. MCKIM
EDWIN DE T. BECHTEL	JOHN S. ROGERS	

### Committee on Shipping and on Seamen's Savings

CHARLES W. BOWRING, Chairman, 17 Battery Place

JAMES BARBER	CHARLES E. DUNLAP	J. FREDERIC TAMS
	SIR T. ASHLEY SPARKS	

### Boat and Harbor Service

J. FREDERIC TAMS, Chairman, 52 Pine Street

OLIVER ISELIN	FRANKLIN REMINGTON	LOUIS GORDON HAMERSLEY
LEROY KING	AYMAR JOHNSON	

### Legislation

EDWIN DE T. BECHTEL, Chairman, 54 Wall Street

EDMUND L. BAYLIES	ERNEST E. WHEELER
-------------------	-------------------

### Ways and Means

CHARLES W. BOWRING, Chairman, 17 Battery Place

ORME WILSON, JR., Vice-Chairman, 120 Broadway		
GEORGE W. BURLEIGH	BAYARD C. HOPPIN	JOHN S. ROGERS
CHARLES A. CLARK	JOHN A. MCKIM	FRANK T. WARBURTON
ROBERT L. HARRISON	JOHN J. RIKER	

### Trust Funds

JOHN A. MCKIM, Chairman, 6 East 74th Street

ROBERT L. HARRISON	ORME WILSON, JR.
--------------------	------------------

### Committee on "The Lookout"

EDMUND L. BAYLIES	BERNON S. PRENTICE	HENRY L. HOBART
-------------------	--------------------	-----------------

### Attorneys for the Society

CARTER, LEDYARD & MILBURN, 54 Wall Street

# Annual Report of the Board of Managers

JANUARY, 1919

The year 1918 brought to the Seamen's Church Institute of New York more opportunities for service than any previous year in its history, and demands have in fact been made upon it by the mariners of the world coming to the Port of New York which have exceeded its capacity to respond. Every nerve, however, has been stretched to meet, so far as possible, the increased responsibilities, and it is a pleasure and satisfaction to state that owing to the generosity of our friends and contributors, combined with the enthusiastic devotion of the staff, in no previous year has so much service been rendered. In practically every department the best previous record of usefulness has been broken, and in reviewing the results accomplished the only regret concerns the Society's inability even yet to do all that should be done for the men of the sea to whom the world owes so much.

We landsmen should recognize with gratitude as never before the seamen of the Allied fleets and merchant navies, and express to them our unbounded thanks for the glorious work they have done to secure the victory of civilization. Undismayed by invisible, constant, silent danger they have ceaselessly performed their duty on every sea, transporting our men and women and supplies, clearing the ocean of German ships, blocking effectively the enemy fleet in its harbors and finally triumphing over the treacherous submarine. Now the war is happily over and the ocean is again safe from enemies, but most of the same men who manned our ships of war and transports will be following the sea for years to come, forming with newer recruits a reserve against any similar emergency.

Glad that we have been able to do so much, we must give and work still more to keep the seaman's calling honored and respected and to make the conditions of his existence cleaner and more wholesome.

## RELIGIOUS AND SOCIAL DEPARTMENT.

Praise and thanks are due to the members of the Religious and Social staff for their magnificent and effective work. The attendance has increased at the religious services, which are conducted not only in English, but in Scandinavian, Russian, Lettish and Dutch. Missionary or pastoral visits are made regularly three days a week to hundreds of ships at docks or at anchor. Hospital visiting is conducted more systematically than ever before. There is a house clinic for sick seamen in the building. In recognition of the value of the Institute's religious work in the hospitals the Public Health Service at Washington has appointed our Superintendent chaplain in charge of religious ministrations in the U. S. Marine Hospital at Stapleton, Staten Island, the first such appointment it is believed, ever made.

To manage and co-ordinate all the religious work of the Society, a new position of "Director of Religious Work" has been created and has been filled by the Rev. John G. Robinson.

Social entertainments of every kind occupy the Auditorium almost nightly. These include concerts, motion picture shows, lectures, roller skating and field sports. A big concert is a weekly feature on Friday nights. On Thursday nights there have been dances for the apprentice lads.

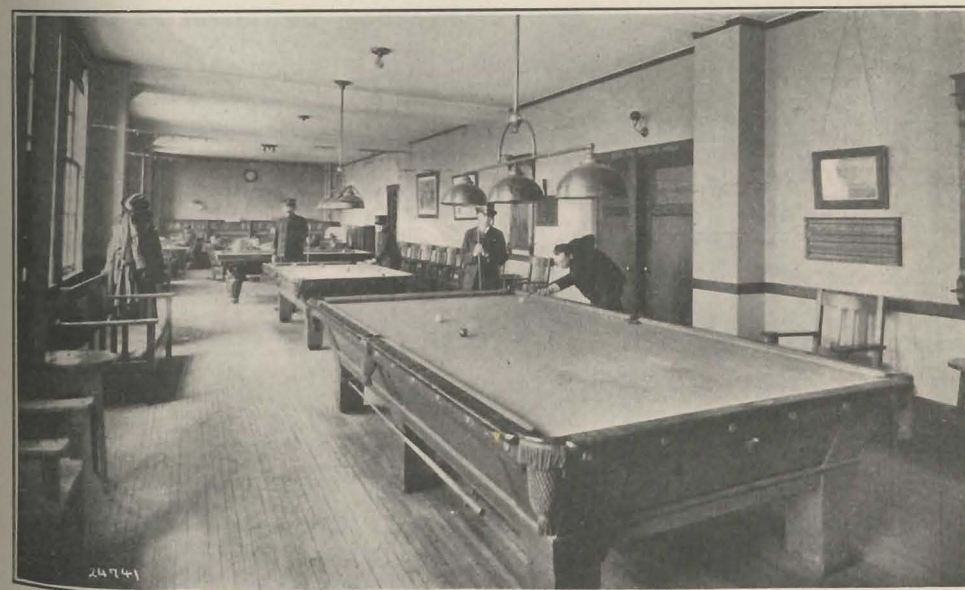
## HOTEL AND RESTAURANT.

Lack of space and shortage of labor were two handicaps which prevented the Hotel Department from rendering as great a service as we wished and as was demanded. Hundreds of men are constantly turned away from the Hotel Desk, though always, we trust, turned away as friends, the situation being well understood. Not to turn over to the hazards of an overcrowded city more than absolutely necessary of the growing numbers of sailors who look to the Institute for lodgings, we have been forced to encroach upon the Game Rooms and the Auditorium. The normal nightly capacity of 518, planned on the erection of the building, has been increased to 712, but even this is insufficient.

219,872 lodgings were registered during the year.

The Lunch Counter, too, has been inadequate and in spite of its size and long hours of operation thousands have been denied the chance it offers to secure clean food at reasonable rates. During the year, 503,720 meals were served. The largest number in one day was 1,809. Nationality sometimes raises interesting food problems; the English blue-jackets consume quantities of tea, while Hollanders are partial to sardines.

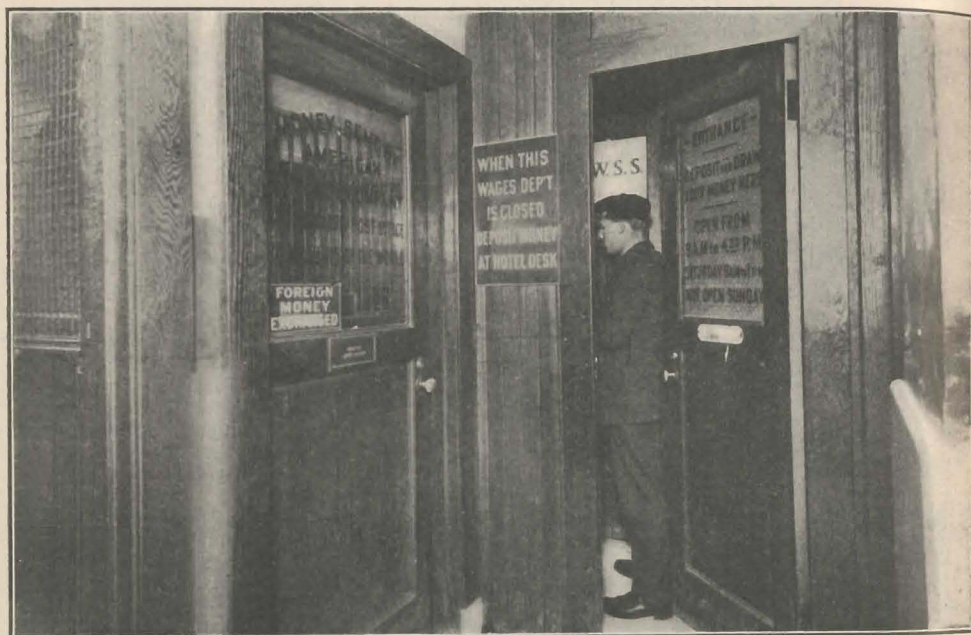
The capacity of the Soda Fountain has been doubled and its business more than doubled.



READING, WRITING AND GAME ROOM FOR LICENSED OFFICERS AND ENGINEERS

## SEAMEN'S WAGES DEPARTMENT.

Never before have seamen so turned to the Institute to hold and protect their earnings. In 1918 they deposited their wages with us for safe keeping or transmission, to the extent of \$727,356.47. Though the depositors represented eighty-one different countries, it is noteworthy that for the first time the largest amount of money was deposited by men sailing under the American flag.



### SEAMEN'S WAGES DEPARTMENT

Receives money for safe keeping, and for Saving Banks. Transmits money by Post Office or Express Order to all parts of the World

### WAYS AND MEANS.

The growth in usefulness of the Institute is only possible through the increase in number of its friends. The contributions from new friends in every part of the world are exceedingly gratifying to the Board of Managers because they not only allow more needs to be met but also testify to a realization of the service which the Institute renders. During the past year subscriptions were received from forty-five States of the Union and also from the Hawaiian Islands, the Virgin Islands, the Argentine Republic, Bermuda, Brazil, the British West Indies, Canada, the Canal Zone, China, Cuba, France, the Friendly Islands, Great Britain, Nicaragua, Salvador, and Venezuela.

## BAGGAGE DEPARTMENT.

One of the most important protective agencies in our entire work—the Baggage Department—is confronted with lack of space. Seamen's baggage is shipped to every part of the world almost daily, and 51,679 incoming pieces have been handled during the year.

### "THE LOOKOUT."

Our publication, "*The Lookout*," goes all over the world, talking intimately about the little incidents that make the seaman's life on shore gay and sad. It is not merely the voice of the Institute but it is the voice of the merchant mariner as well, who becomes a very real person to his unknown friends; his problems become important, and whatever will make him happy and more convinced that he has a very genuine home in this port of New York is described with affectionate detail. The monthly circulation is over 10,000 copies. Katherine Lane Spaeth makes "*The Lookout*" what it is.

## SHIPPING DEPARTMENT.

War conditions materially affected the customary activity in shipping men for the Merchant Marine. Many vessels were requisitioned by the Government and manned directly with naval crews. Nevertheless, crews, or parts of crews, to a total of 3,097 men were placed on 489 vessels.

## OTHER DEPARTMENTS.

On account of labor conditions, the year 1918 was the most difficult year for the Engineers' Department since the building was opened. Nevertheless, the engines and entire mechanical equipment are in unusually good condition. Great praise is due to this Department for its remarkable record in this respect.

The Post Office work increased so fast that it has been segregated from the hotel desk and put in charge of an expert U. S. post office clerk. During the year 60,229 pieces of incoming seamen's mail were received, in addition to that coming to the Administration and other departments of the Institute.

The Printing Department is still in an experimental stage but is proving its value and increasing its capacity.

The continued remarkable growth of the Supply Store proves its great popularity with the seamen, over 31,000 customers were served in 1918. The sales included 1,010 pairs of shoes, 586 suit cases, 3,332 collars, 5,400 handkerchiefs and 10,711 pieces of soap.

## NORTH RIVER STATION.

This station has had a busy year, though hampered by the coal famine and the influenza epidemic. The Manager, Mr. Allen S. Gookin, who has just completed five years of service, lays special stress on religious and reform work, and in consequence, the chapel attendance has been excellent. In addition to its usual work, the Station has co-operated with the Red Cross and similar organizations, assisted the U. S. Shipping Board and acted as an agency of the government in selling war saving stamps, certificates, etc.

## NAVIGATION AND MARINE ENGINEERING SCHOOL.

The very helpful work accomplished by the Institute through this school has received hearty voluntary commendation from the U. S. Navy Department, the U. S. Shipping Board and the Local Inspectors. In fitting worthy young men to qualify for Pelham Bay and the Great Lakes naval stations, the school has performed a most valuable war service, and has made a name for itself and established a reputation which makes for its permanent success; 122 men were examined and passed for Pelham Bay and the Great Lakes; 562 were examined and passed by the Local Inspectors; the total number qualified for service was 1,074; the total enrollment for the year, 1,679; the daily average attendance, 81.



SHIP'S BRIDGE

Some students of the Institute Navigation School on the roof, "shooting the Sun," and learning the use of the Sextant

### THE "J. HOOKER HAMERSLEY."

Our serviceable little tender was unable to perform the usual amount of missionary work in the harbor, on account of the war conditions prevailing. Nevertheless, she carried our Institute flag with its message of service and good cheer to 347 vessels and transported 1,953 men and 1,149 pieces of dunnage. She also rendered valuable war time service in connection with the Navigation School, making 71 trips for the instruction of students. It is hoped to place an additional similar boat in commission in the spring.

### LEGACIES.

The following bequests were made to the Society in 1918:  
 Mrs. Margaret E. Zimmerman.....\$10,000  
 Mrs. Louisa Combe ..... 2,500

Francis Norman ..... 1,000  
 Miss Mary Benson ..... 25,000  
 Mrs. Elizabeth P. Kirby ..... 1,000

Mrs. Sarah A. Perrott, a house and lot in Brooklyn, valued \$2,200 over an existing mortgage.

### NEW CEMETERY PLOT.

"A Stranger in a strange land." That old phrase describes the seaman who dies in New York, who lies alone in the hospital, or sometimes in the Institute! He turns to us when the end is near, confident that to us he is not a stranger, that what is left when he no longer can worry or arrange, will be reverently cared for.

We have buried many seamen lately, and our plot in Evergreen Cemetery can no longer welcome its silent guests.

For the past two years we have asked for contributions to our Cemetery Plot and Burial Fund and several hundred dollars have been received for this fund.

We have now purchased a plot in Cedar Grove Cemetery, Flushing, New York.

It is a gracious place for the seamen's rest.

### NATIONAL ORGANIZATION.

Though extending beyond our own activities, reference should be made to the Seamen's Church Institute of America. The War Commission of the Church has made an appropriation towards the work of this organization, and an Organizing Secretary has been selected and called. New institutes will be organized and some already existing will be reorganized with a view to reproducing work similar to ours in all the large American ports.

### OBITUARY

During the past year the Society suffered the loss of three of its number:

**Rt. Rev. Frederick Courtney, D.D.**, Clerical Vice President, was one of the Institute's oldest and most actively interested friends. His kindly wisdom and keen perception always made his advice in the Society's complex work for seamen invaluable. He frequently took part in the services, dedications and ceremonies to which his great dignity and vitality undimmed by years added especial inspiration. His loss is greatly felt by the members of the Board and by all who had the privilege of working with him.

**Commodore Jacob W. Miller, U. S. N., Ret.**, a member of the Board since 1897, was one of its Lay Vice Presidents. Commodore Miller was one of the first to realize the importance of the American Merchant Marine and its future. He was actively and courageously interested in seamen and their affairs largely centering in educational work, especially in quickly preparing men for duty in the War. The loss of his genuine, sympathetic cooperation is profoundly felt by all his co-workers at the Institute.

**William M. Polk, M.D.**, one of the Lay Managers, whose keen interest in our work, strong personality and honored name have left an invaluable record. His loss is irreparable to all who enjoyed his friendship and his wise counsel.

## GENERAL SUMMARY OF WORK

ALL STATIONS AND DEPARTMENTS, JANUARY 1, 1918, TO DECEMBER 31, 1918  
Submitted by the REV. ARCHIBALD R. MANSFIELD, D.D., Superintendent

### SEAMEN'S WAGES DEPARTMENT.

Number of Deposits.....	5,163	Amount of Transmissions...\$	64,130.31
Number of Transmissions...	1,114	Cities and Countries to which	
Home Countries of Depositors .....	81	money has been sent.....	103
Amount of Deposits.....	\$727,356.47	Signatures witnessed by our	
		Notary Public .....	1,101

### SHIPPING DEPARTMENT.

Men signed and shipped....	3,097	Total number of men provided with employment....	3,931
Men provided with employment, temporary, ship or other .....	834	Number of vessels to which crews have been furnished	489

### BOAT AND HARBOR SERVICE, TENDER "J. HOOKER HAMERSLEY."

Trips made .....	368	Vessels visited .....	347
Men transported .....	1,953	Dunnage transported .....	1,149

### RESTAURANT, HOTEL, POST OFFICE, DUNNAGE AND SLOP CHEST DEPARTMENTS.

Meals served .....	503,720	Lodgings registered .....	219,872
No. of sales at Soda Fountain .....	343,151	Pieces of mail received for seamen .....	60,229
Sales at Slop Chest.....	31,267	Pieces of dunnage checked..	51,679

### RELIGIOUS AND SOCIAL DEPARTMENT.

English Services .....	281	Bible Class Meetings.....	45
Attendance .....	14,389	Attendance .....	2,940
Scandinavian Services .....	70	Sing Song Services.....	26
Attendance .....	977	Attendance .....	3,220
Lettish Services .....	28	Entertainments (Season Oct. to May) .....	79
Attendance .....	511	Attendance .....	20,385
Russian Services .....	2	Special Summer Concerts....	41
Attendance .....	88	Attendance .....	8,841
Holland Services .....	3	Comfort bags and knitted articles distributed .....	1,056
Attendance .....	75	Christmas Gifts distributed..	1,450
Baptisms .....	19	Packages reading matter distributed .....	1,907
Marriages .....	17	Visits to vessels.....	673
Funerals .....	97		
Communion Services (Public and Private) .....	30		

### EDUCATIONAL DEPARTMENT.

First Aid Lectures.....	36	No. students receiving commissions .....	104
Attendance .....	367	No. cruises made on the Hamersley for practical instruction .....	71
Board of Education Public School Lectures .....	28	Attendance .....	1,207
Attendance .....	3,162	Noonday Talks .....	44
Students enrolled in Navigation and Marine Engineering School .....	1,679	Attendance .....	5,300

### RELIEF DEPARTMENT

Aided from Morrill, Morgan, and Bourne and other Funds .....	1,927	Visits to Hospitals.....	557
Sent to Legal Aid and other Societies .....	123	Sent to Hospitals and Dispensaries .....	299
		Visits to Patients.....	8,217

## TREASURER'S ANNUAL STATEMENT

January 1, 1918 to December 31, 1918

### INCOME

Revenue from Outside Sources:	
Subscriptions and Donations .....	\$98,149.78
Church Offerings .....	4,712.19
Collections on Ships .....	555.53
Net Income from Invested Funds .....	5,876.15
	<hr/>
	\$109,293.65
Revenue from Institute Activities:	
Hotel (including Lodgings, Barber Shop, Baggage Room), Restaurant, Soda Fountain, Slop Chest, Shipping and Printing Departments; Navigation and Marine Engineering School .....	\$332,849.01
North River Station .....	203.04
Rent, British Consulate General Shipping Branch .....	1,872.00
Miscellaneous .....	4,817.48
	<hr/>
	\$449,035.18

### EXPENDITURES

Institute Building, 25 South Street:	
Religious and Social Work .....	\$18,722.02
Seamen's Church Institute of America .....	250.00
Salaries of Superintendent and Staff, Wages of Employees in all other Departments; also supplies for Hotel, Restaurant, Engine Room, Slop Chest, Navigation and Marine Engineering School, Printing Department, etc. ....	377,630.32
Institute Boat "J. Hooker Hamersley" and Shipping Department, Salaries and Expenses .....	10,477.47
"The Lookout": Salaries, Printing and Postage .....	6,060.74
North River Station: Salaries, Expenses, Repairs .....	7,357.33
Repairs and Replacement Fund .....	7,000.00
Building Equipment, Repairs and Replacements, .....	32,554.80
	<hr/>
	460,052.68
Deficit .....	\$ 11,017.50

FRANK T. WARBURTON, Treasurer.

### Morrill, Morgan and Bourne Fund

RECEIPTS.		PAYMENTS.	
Balance on hand, Jan. 1, 1918 .....	\$ 8.11	Paid Rev. A. R. Mansfield, D.D., for the purposes of the fund .....	\$ 755.88
Income from Invested Funds .....	1,214.80	Balance on hand, Dec. 31, 1918 .....	467.03
	<hr/>		<hr/>
\$1,222.91		\$1,222.91	

### Roxy M. Smith Fund

Receipts .....	\$ 102.88
Payments (Income to Religious and Social Department) .....	102.88

### Cemetery Plot and Burial Fund

Used for burial of destitute seamen and upkeep of burial plots.	
Balance on hand, January 1, 1918 .....	\$ 911.03
Receipts .....	3,723.08
	<hr/>
	\$4,634.11
Payments:—General expenses .....	\$1,717.50
Purchase of new plot in Cedar Grove Cemetery, Flushing, N. Y. ....	4,320.00
	<hr/>
	\$6,037.50
Deficit .....	\$1,403.39

FRANK T. WARBURTON, Treasurer.



## COMMITTEE ON TRUST FUNDS

### SUMMARY

#### ASSETS

Railroad Securities, etc., . . . . .	\$ 88,524.62	
Bonds and Mortgages, . . . . .	68,750.00	
Real Estate: 52 Market Street, . . . . .	\$ 7,000.00	
Front Street property . . . . .	41,131.23	48,131.23
<hr/>		
Cash on deposit: Emigrant Industrial Savings Bank . . . . .	250.00	
N. Y. Life Insurance & Trust Co., . . . . .	9,147.76	9,397.76
<hr/>		
		<u>\$214,803.61</u>

PERMANENT FUND: Income to be applied to the general uses of the Society.

Balance, last report, . . . . .	\$99,565.80	
Legacy, Mary A. Sutton, . . . . .	\$ 358.84	
" Cornelia Augusta Beekman, . . . . .	5,000.00	
" Sarah Frances Cotheal, . . . . .	1,000.00	
Anonymous, . . . . .	2,500.00	8,858.84
		<u>\$108,424.64</u>

WILLIAM WALDORF ASTOR TRUST FUND: Income to be applied first to the support of missionary at East River Station, and afterwards to the maintenance of any missionaries employed by the Society, . . . . . 50,760.50

CHARLES E. RHINELANDER FUND: In memory of his wife, Matilda F. Rhinelander. Income to be applied to the general uses of the Society, . . . . . 25,000.00

#### Funds For Special Purposes

DAVENPORT FUND: Income to be applied to the purchase of books for distribution among seamen, . . . . .	2,000.00
MORRILL FOUNDATION: In memoriam of the late Captain Charles Montgomery Morrill. Income to be applied exclusively to the relief of destitute mariners and those dependent upon them who may have been left destitute by their death while following the sea, . . . . .	17,831.25
HOSIER MORGAN FUND: Income to be used in common with that of the Morrill Foundation Fund, . . . . .	1,735.27
EMILY H. BOURNE FUND: Income to be used in common with that of the Morrill Foundation Fund, . . . . .	5,000.00
SEAMEN'S RELIEF FUND: Income to be used in common with that of the Morrill Foundation Fund, . . . . .	751.95
"C. A. R." MEMORIAL FUND: Income to be used for some needy object, . . . . .	500.00
ROXY M. SMITH FUND: In memory of her husband W. V. R. Smith. Income to be applied to giving annually an entertainment for seamen on the birthday of W. V. R. Smith, August 2nd, . . . . .	2,000.00
CAPT. WILLIAM WILSON OWEN MEMORIAL FUND: Income to be applied to the use of destitute sailors under the care of the Institute, . . . . .	250.00
CHAPEL FLOWER FUND: Income to be used for flowers for the altar of the Chapel, . . . . .	550.00
	<u>\$214,803.61</u>

## INCOME.

Received from mortgages, . . . . .	\$3,699.14
Received from railroad securities, etc., . . . . .	3,637.37
Received from Emigrant Industrial Savings Bank, . . . . .	15.30
Received from New York Life Insurance & Trust Co., . . . . .	193.33
	<u>\$7,545.14</u>

Distributed as follows:

Permanent Fund, . . . . .	Paid Treasurer,	\$2,612.01	
Astor Fund, . . . . .	" "	2,219.07	
Rhinelanders Fund, . . . . .	" "	1,107.40	
Davenport Fund, . . . . .	" "	102.89	\$6,041.37
<hr/>			
Merrill Foundation Fund, . . . . .	" "	878.81	
Hosier Morgan Fund, . . . . .	" "	88.49	
Bourne Fund, . . . . .	" "	247.50	
Seamen's Relief Fund, . . . . .	" "	22.52	
"C. A. R." Memorial Fund, . . . . .	" "	15.01	
Capt. Owen Fund, . . . . .	" "	15.15	1,267.48
<hr/>			
Roxy M. Smith Fund, . . . . .	" "	102.88	
Chapel Flower Fund, . . . . .	" "	1.33	104.21
<hr/>			
Astor Fund, transferred to Sinking Fund, . . . . .		58.50	
New York Life Insurance & Trust Co., Commissions, . . . . .		73.58	132.08
			<u>\$7,545.14</u>

Dated, New York, January 15th, 1919.



Lunch Room—Open daily and Sunday, 6 A. M. to 8 P. M.—best food, wholesomely prepared, reasonable prices.

JOHN A. MCKIM,  
ROBERT L. HARRISON.  
Committee on Trust Funds.

Securities examined and found  
to agree with the above account.

BENJ. T. VAN NOSTRAND,  
CHARLES W. BOWRING.  
Auditing Committee.

# Eighteenth Annual Report

OF THE

## Seamen's Benefit Society

The only women's auxiliary actively connected with the Seamen's Church Institute is the organization founded in 1900, known as the Seamen's Benefit Society. Its officers are:

*President*—Miss Catharine S. Leverich

*Secretary*—Miss Augusta M. de Peyster

*Treasurer*—Mrs. George A. Lung

One of its special interests has always been the work for the apprentice lads of the British and American Merchant Marine, the young boys from fourteen to twenty who are taking their training in the merchant service preparatory to becoming mates, engineers and captains. These boys have a club-room of their own in the *Institute*, which was originally the gift of the Seamen's Benefit Society, and recently redecorated by friends of the *Institute*, who are especially interested in their welfare.

During the year 1918, the Society has been active as follows:

Contributed money for Thursday evening entertainments for the boys; for theatre parties and refreshments; for Sunday night teas at the building; for picnics, tennis racquets, cricket bats and base balls during the summer.

They have sent games, reading matter, knitted articles, comfort bags, clothing and flowers for the *Institute* as well as for the apprentice lads. At the Lenten Sewing Class, the Society made and sent for use at the *Institute*, towels, sheets and pillow cases.

The Society is glad to have the co-operation of all women who realize the tremendous importance of the work for merchant seamen, and whose sympathies have been profoundly stirred by the great service these men of the sea have performed so quietly and so courageously during the long war.

AUGUSTA M. DE PEYSTER, *Secretary*.

December, 1918.



THE TENDER "J. HOOKER HAMERSLEY"

Presented to the Society on January 3, 1915, by Louis Gordon Hamersley  
in memory of his Father

Designed by Tams, Lemoine & Crane, and built by the W. R. Osborn Estate  
Especially equipped and used for practical instruction in Navigation

## SEAMEN'S BENEFIT SOCIETY

IN ACCOUNT WITH HELEN VAN C. LUNG, TREASURER

DECEMBER 1, 1917 TO DECEMBER 1, 1918,

<i>Receipts.</i>		<i>Expenditures.</i>	
Balance, as per last report	\$ 237.98	At Seamen's Church Institute,	
Received since:		Social Work	\$ 489.13
Dues	361.00	Sewing Class Expenses	100.00
Proceeds, Lenten Sewing Class	353.00	Exchange on check	.02
Interest	7.00		\$589.15
		Balance due Society, December	
		1, 1918	369.83
	\$958.98		\$958.98

Audited and found correct,

G. G. SCHWEIZER,  
*Lieut., Pay Corps, U. S. N.*

# SEAMEN'S BENEFIT SOCIETY

## Officers

MISS CATHARINE S. LEVERICH, *President*      MRS. GEORGE A. LUNG, *Treasurer*  
 MISS AUGUSTA M. DE PEYSTER, *Secretary*.

## Active Members

MRS. WALTER P. ANDERTON	MRS. VERNON S. MANN
MISS JOSEPHINE L. BIEKMAN	MRS. HOWARD T. MARTIN
MISS FRANCES C. DE PEYSTER	MRS. FRANK B. PORTER, JR.
MISS ISABEL M. GREGORY	MRS. JOSEPH FERRIS SIMMONS
MRS. RYDER HENRY	MRS. CHARLES FEARING SWAN
MRS. SAMUEL N. HINCKLEY	MRS. HENRY C. SWORDS
MISS EDITH VAN C. JAY	MISS EMILY B. VAN AMRINGE
MISS MARGARET D. LEVERICH	

## Associate Members

MISS LOUISA H. BARNARD	MRS. WOODBURY G. LANGDON
MRS. EDMUND L. BAYLIES	MRS. LEA MCL. LUQUEE
MRS. EDWARD N. BREIUNG	MRS. ALFRED T. MAHAN
MRS. J. J. BLODGETT	MRS. MEYERKORT
MR. ALEXANDER JAY BRUEN	MRS. ABERCROMBIE MILLER
MISS EMILY BUCH	MRS. HENRY LEWIS MORRIS
MRS. ANDREW CARNEGIE	MRS. NEWBOLD MORRIS
MRS. GEORGE L. CHENEY	MRS. J. I. MOUNT
MISS ANNIE CLARKSON	MRS. EDWARD P. MEANY
MRS. ARTHUR COPPELL	MRS. WILLIAM A. NETTLETON
MRS. B. FARQUHAR CURTIS	MISS EMILY NORRIE
MRS. VERNON M. DAVIS	MRS. ALFRED DUANE PELL
MRS. JAMES MAY DUANE	MRS. ALBERT E. PUTMAN
MISS KATHARINE DU BOIS	MRS. WILLIAM M. PURDY
MRS. JOHN R. DELAFIELD	MRS. FRANKLIN D. ROOSEVELT
MRS. HAMILTON FISH	MRS. JAMES R. ROOSEVELT
MRS. ANSON R. FLOWER	MRS. W. EMLEN ROOSEVELT
MRS. ELBERT H. GARY	MRS. HERBERT L. SATTERLEE
MRS. WILLIAM PIERSON HAMILTON	MISS DOROTHY SCHIEFFELIN
MRS. ANSON W. HARD, JR.	MRS. MORTON L. SCHWARTZ
MRS. ROBERT HOE	MRS. EDWIN B. SHELDON
MRS. FREDERICK T. HOPPIN	MRS. HENRY F. SHOEMAKER
MISS SARAH L. HORN	MRS. EDWARD B. SEXTON
MRS. E. DE P. HOSMER	MRS. EDWARD SPARROW
MRS. FRANK LONDON HUMPHREYS	MISS ELIZABETH M. VAN WINKLE
MISS MARGARET A. JACKSON	MRS. JAMES B. VAN WOERT
MISS LUCY H. KEAN	MRS. PATRICK A. VALENTINE
MRS. RUTHERFORD KEARNY	MISS JULIA CHESTER WELLS
MISS CORNELIA KIRBY	MRS. LAWRENCE WELLS
MISS EDITH KING	MISS EDITH WETMORE
MRS. JOSEPH T. LOW	MISS CAROLINE WHITE
MRS. SETH LOW	MISS MAY W. WHITE
MRS. WILLIAM G. LOW	MISS ETHEL ZABRISKIE

## Honorary Members

C. CLIVE BAYLEY, H.B.M., Consul General of Great Britain  
 STEIN BARVE, Consul General, The Netherlands  
 ROMOLO TRITONJ, Consul General, Italy  
 C. RAVN, Consul General, Norway  
 Rt. Rev. DAVID H. GREER, D.D., LL.D.  
 Rt. Rev. CHARLES S. BURCH, D.D.



**TITANIC MEMORIAL LIGHTHOUSE TOWER**

*Time Ball* drops daily, exact noon. *Green Light* burns nightly. Three Cooper Hewitt Quartz lamps each 2,500 candle power.

## Form of Bequest

I give and bequeath to the "SEAMEN'S CHURCH INSTITUTE OF NEW YORK," a corporation incorporated under the Laws of the State of New York, the sum of \_\_\_\_\_ Dollars, to be used by it for its corporate purposes.

Donations should be sent to

FRANK T. WARBURTON, TREASURER,

25 SOUTH STREET, NEW YORK, N. Y.